



## Highbourne Park

Lenham, Maidstone ME17 2PE

- 5 Double Bedrooms with 4 Bathrooms
  - Private Estate
  - Large Triple Garage
  - Kitchen/Day Room
  - Available Immediately!
- Beautiful Rural location
- Stunning Landscaped Garden
- En-suite & dressing room to Master bedroom
- Close to M20 & M2 Motorways

**£4,500 PCM**

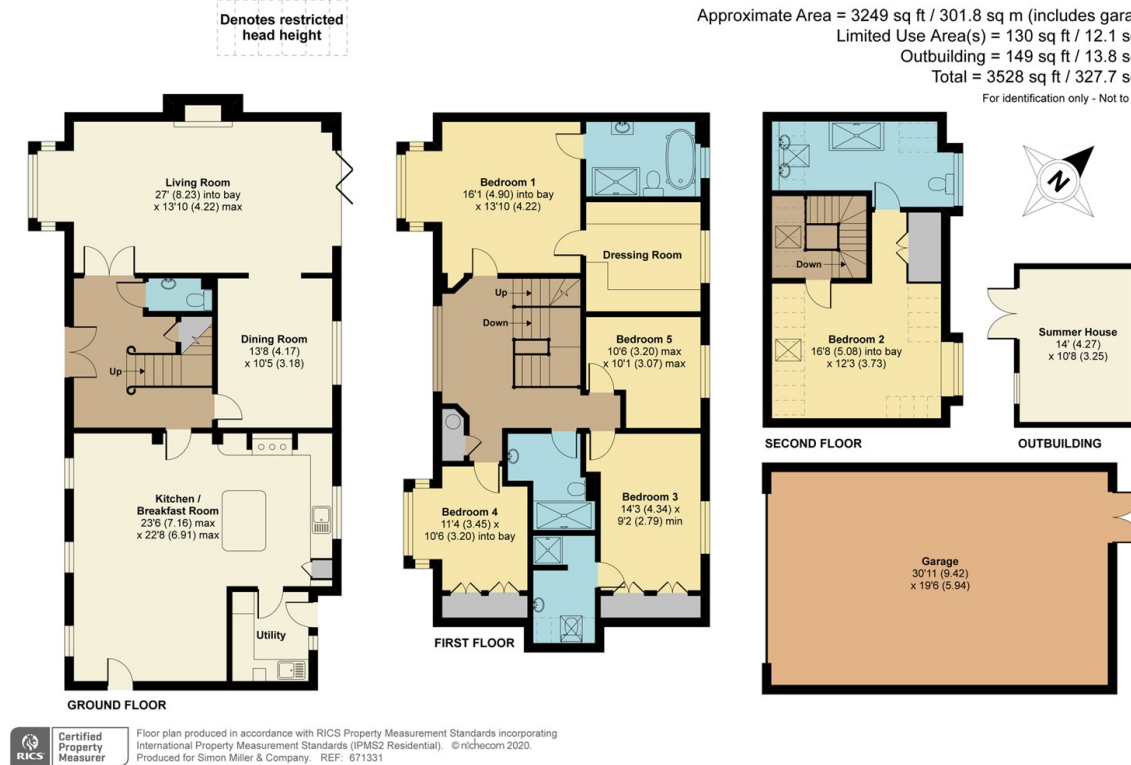


Local Authority Ashford  
Borough Council  
Council Tax Band H  
EPC Rating C

## Highbourn Park, Lenham, Maidstone, ME17

Approximate Area = 3249 sq ft / 301.8 sq m (includes garage)  
Limited Use Area(s) = 130 sq ft / 12.1 sq m  
Outbuilding = 149 sq ft / 13.8 sq m  
Total = 3528 sq ft / 327.7 sq m

For identification only - Not to scale



### Lettings Office

Lettings Division, 779 London Road,  
Larkfield, Aylesford, Kent, ME20 6DE

### Contact

01732 875777  
lettings@simonmiller.co.uk  
<https://simonmiller.co.uk/landlo-services/>

Agents Note: Whilst every care has been taken to prepare these particulars, they are for guidance purposes only. All measurements are approximate and for general guidance purposes only and whilst every care has been taken to ensure accuracy, they should not be relied upon and potential buyers/tenants are advised to recheck the measurements.