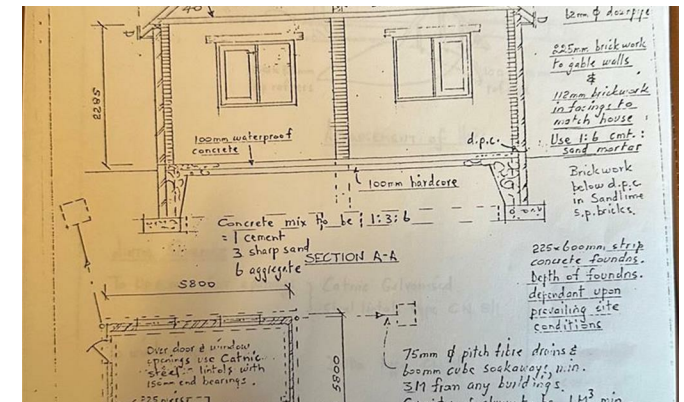




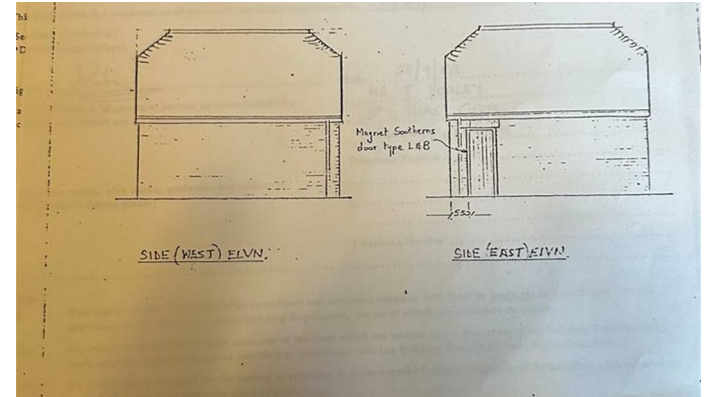
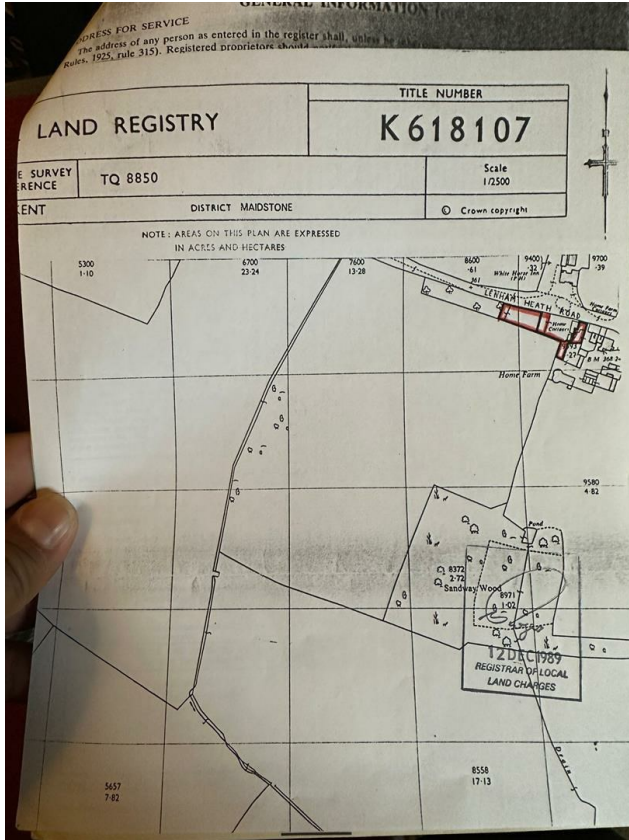
## Sandway, Maidstone ME17 2HY

- GUIDE PRICE £100,000 - £125,000
  - Driveway and Parking
- Sought After Semi Rural Location
- Planning Permission For A Detached Double Garage
- Foundations and Dilapidated Brick Structure
- Good Sized Plot
- Total Plot Approx 306 Square Meters

**Guide Price £100,000 Freehold**



**Local Authority Maidstone  
Council Tax Band  
EPC Rating**



**Maidstone & The Weald Office**  
11 Colman House, Colman Parade, King  
Street, Maidstone, Kent, ME14 1DJ

**Contact**  
01622 691255  
maidstonesales@simonmiller.co.uk

Agents Note: Whilst every care has been taken to prepare these particulars, they are for guidance purposes only. All measurements are approximate and for general guidance purposes only and whilst every care has been taken to ensure accuracy, they should not be relied upon and potential buyers/tenants are advised to recheck the measurements.