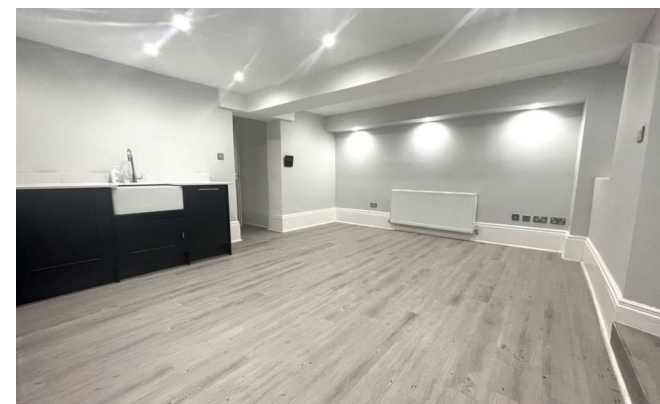




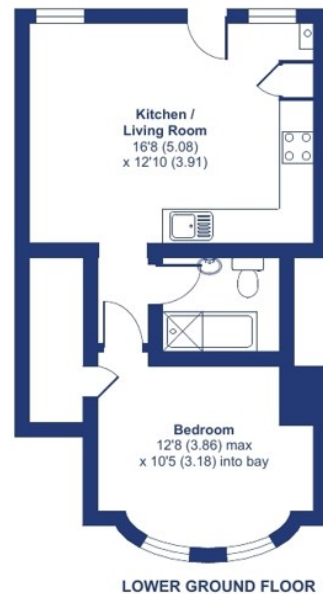
**King Street**  
, Maidstone ME14 1BQ

- One Double Bedroom
- Allocated Parking
- Fully Refurbished
- Available Beginning of December
- Few Minutes Walk to Town Centre

**£950 PCM**



Local Authority Maidstone  
Borough Council  
Council Tax Band B  
EPC Rating C



#### Lettings Office

Lettings Division, 779 London Road,  
Larkfield, Aylesford, Kent, ME20 6DE

#### Contact

01732 875777  
[lettings@simonmiller.co.uk](mailto:lettings@simonmiller.co.uk)  
<https://simonmiller.co.uk/landlo/services/>

Agents Note: Whilst every care has been taken to prepare these particulars, they are for guidance purposes only. All measurements are approximate and for general guidance purposes only and whilst every care has been taken to ensure accuracy, they should not be relied upon and potential buyers/tenants are advised to recheck the measurements.

