



## Cherry Orchard

Ditton, Aylesford ME20 6QS

- Extended Three Bedroom Semi Detached Family Home
- Three Double Bedrooms
- Driveway And Integral Garage
- Modern Fitted Kitchen With Integrated Appliances
- Through Lounge / Diner
- Downstairs W/C

**Asking Price £400,000 Freehold**

Local Authority  
Council Tax Band D  
EPC Rating C



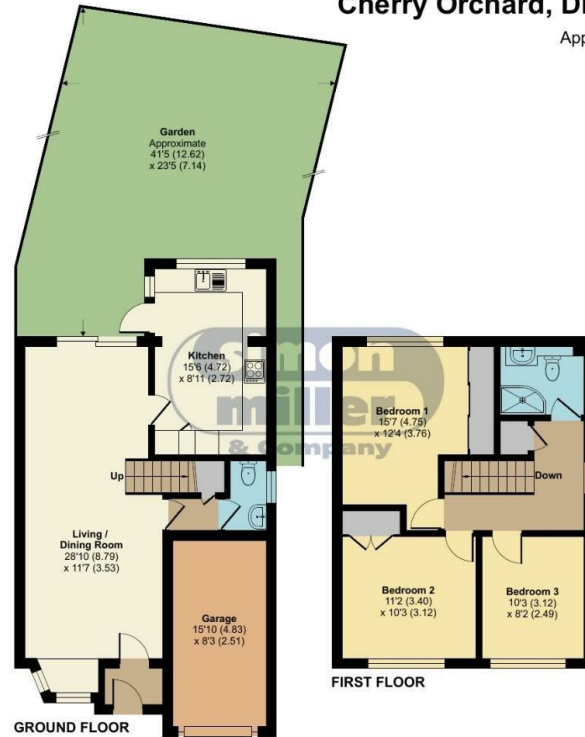
## Cherry Orchard, Ditton, Aylesford, ME20

Approximate Area = 1049 sq ft / 97.4 sq m

Garage = 121 sq ft / 11.2 sq m

Total = 1170 sq ft / 108.6 sq m

For identification only - Not to scale



Floor plan produced in accordance with RICS Property Measurement Standards incorporating International Property Measurement Standards (IPMS2 Residential). © nichecom 2023. Produced for Simon Miller & Company. REF: 1067966

### Malling Office

777 London Road, Larkfield, Aylesford,  
Kent, ME20 6DE

### Contact

01732 875706  
larkfieldsales@simonmiller.co.uk  
<https://simonmiller.co.uk/>

Agents Note: Whilst every care has been taken to prepare these particulars, they are for guidance purposes only. All measurements are approximate and for general guidance purposes only and whilst every care has been taken to ensure accuracy, they should not be relied upon and potential buyers/tenants are advised to recheck the measurements.

