



The Lakes

Larkfield, Aylesford ME20 6GS

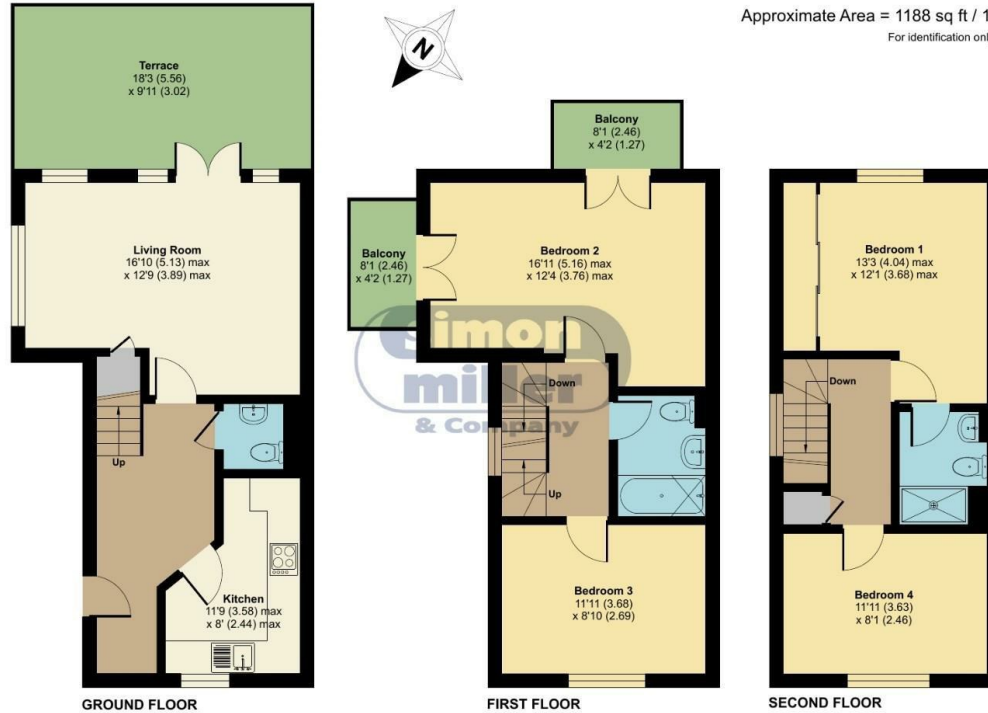
- CHAIN FREE!
- Two Balcony's
- Master Bedroom With En Suite
- Corner Plot
- Expansive Views Over Leybourne Lakes
- Two Allocated Parking Spaces
- Flexible Family Accommodation

Asking Price £425,000 Freehold

Local Authority
Council Tax Band E
EPC Rating C

The Lakes, Larkfield, Aylesford, ME20

Approximate Area = 1188 sq ft / 110.3 sq m
For identification only - Not to scale



 Floor plan produced in accordance with RICS Property Measurement Standards incorporating International Property Measurement Standards (IPMS2 Residential). © nichecom 2023. Produced for Simon Miller & Company. REF: 1060491



Malling Office
777 London Road, Larkfield, Aylesford,
Kent, ME20 6DE

Contact
01732 875706
larkfieldsales@simonmiller.co.uk
<https://simonmiller.co.uk/>

Agents Note: Whilst every care has been taken to prepare these particulars, they are for guidance purposes only. All measurements are approximate and for general guidance purposes only and whilst every care has been taken to ensure accuracy, they should not be relied upon and potential buyers/tenants are advised to recheck the measurements.