



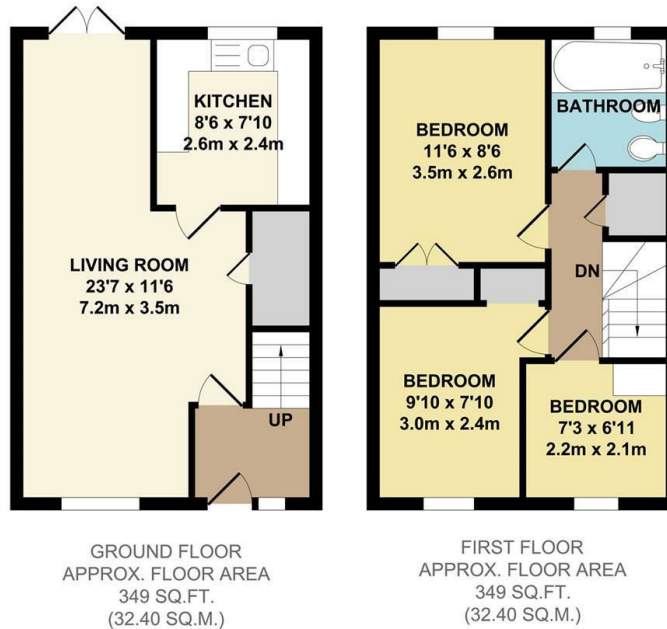
## Crownfields

Weavering, Maidstone ME14 5TH

- Well Presented End of Terraced House
  - Three Bedrooms
- Gas Central heating & Double Glazing
  - Available Immediately!
- Quiet & Popular Residential Area
  - Garage And Off Street Parking
  - Front And Rear Gardens

**£1,500 PCM**

Local Authority Maidstone  
Borough Council  
Council Tax Band C  
EPC Rating C



TOTAL APPROX. FLOOR AREA 698 SQ.FT. (64.80 SQ.M.)

Whilst every attempt has been made to ensure the accuracy of the floor plan contained here, measurements of doors, windows, rooms and any other items are approximate and no responsibility is taken for any error, omission or mis-statement. This plan is for illustrative purposes only and should be used as such by any prospective purchaser. The services, systems and appliances shown have not been tested and no guarantee as to their operability or efficiency can be given.  
Zome Media ©2019

### Lettings Office

Lettings Division, 779 London Road,  
Larkfield, Aylesford, Kent, ME20 6DE

### Contact

01732 875777  
lettings@simonmiller.co.uk  
<https://simonmiller.co.uk/landlo/services/>

Agents Note: Whilst every care has been taken to prepare these particulars, they are for guidance purposes only. All measurements are approximate and for general guidance purposes only and whilst every care has been taken to ensure accuracy, they should not be relied upon and potential buyers/tenants are advised to recheck the measurements.

