



Union Street

, Maidstone ME14 1EH

- One Bedroom Mews Cottage
- Shingled Communal Area
 - Downstairs WC
 - Central Location
- Bathroom
- Ideal For Commuters
- Close To Amenities
- Available End of August

£950 Per Calendar Month



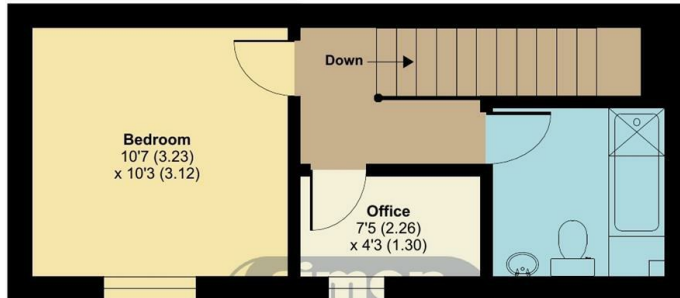
Local Authority Maidstone
Council Tax Band B
EPC Rating E



Union Street, Maidstone, ME14

Approximate Area = 544 sq ft / 50.5 sq m

For identification only - Not to scale



FIRST FLOOR



GROUND FLOOR



Floor plan produced in accordance with RICS Property Measurement Standards incorporating International Property Measurement Standards (IPMS2 Residential). © nichecom 2023. Produced for Simon Miller & Company. REF: 934869

Lettings Office

Lettings Division, 779 London Road,
Larkfield, Aylesford, Kent, ME20 6DE

Contact

01732 875777
lettings@simonmiller.co.uk
<https://simonmiller.co.uk/landlo/services/>

Agents Note: Whilst every care has been taken to prepare these particulars, they are for guidance purposes only. All measurements are approximate and for general guidance purposes only and whilst every care has been taken to ensure accuracy, they should not be relied upon and potential buyers/tenants are advised to recheck the measurements.

