



## Station Road

, Aylesford ME20 7QR

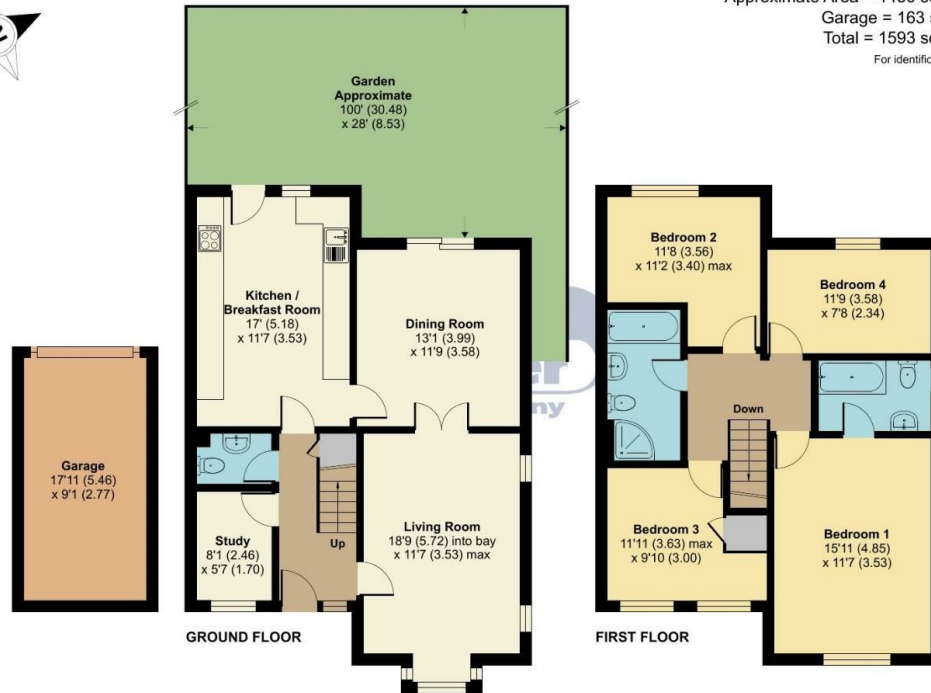
- READY TO VIEW NOW
- Situated On A No Through Road
- Study and Ground Floor Cloakroom
- Large Bathroom with Separate Shower and Bath
- Three Reception Rooms
- Open Plan Kitchen / Diner
- Generous Garden, Driveway And Garage
- Aylesford Village Location

**Offers In Excess Of £475,000 Freehold**





Local Authority  
Council Tax Band D  
EPC Rating C



### Station Road, Aylesford, ME20

Approximate Area = 1430 sq ft / 132.8 sq m  
Garage = 163 sq ft / 15.1 sq m  
Total = 1593 sq ft / 147.9 sq m  
For identification only - Not to scale



Floor plan produced in accordance with RICS Property Measurement Standards incorporating International Property Measurement Standards (IPMS2 Residential). © nichecom 2023. Produced for Simon Miller & Company. REF: 1038844

#### Malling Office

777 London Road, Larkfield, Aylesford,  
Kent, ME20 6DE

#### Contact

01732 875706  
larkfieldsales@simonmiller.co.uk  
<https://simonmiller.co.uk/>

Agents Note: Whilst every care has been taken to prepare these particulars, they are for guidance purposes only. All measurements are approximate and for general guidance purposes only and whilst every care has been taken to ensure accuracy, they should not be relied upon and potential buyers/tenants are advised to recheck the measurements.