



Thomas Road , Aylesford ME20 7FS

- Ground Floor Two Bedroom Apartment
 - Allocated Parking
- Modern And Contemporary Throughout
 - Two Bathrooms
- Service Charge Can Be Paid Monthly
- Master Bedroom With En Suite
 - Quiet Location
- Two Double Bedrooms
 - Open Plan Layout

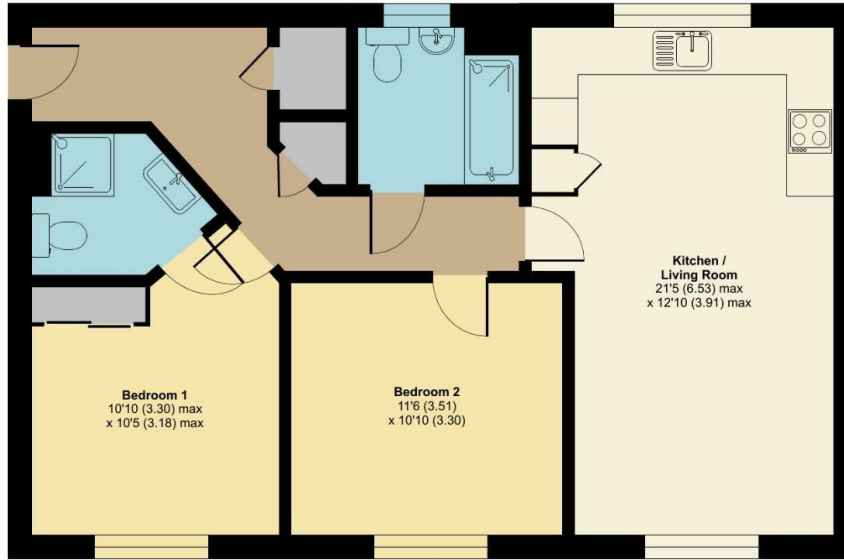
Asking Price £260,000 Leasehold

Local Authority
Council Tax Band C
EPC Rating B

Thomas Road, Aylesford, ME20

Approximate Area = 731 sq ft / 68 sq m

For identification only - Not to scale



GROUND FLOOR



Floor plan produced in accordance with RICS Property Measurement Standards incorporating International Property Measurement Standards (IPMS2 Residential). © nichecom 2024. Produced for Simon Miller & Company. REF: 1124020

Malling Office

777 London Road, Larkfield, Aylesford,
Kent, ME20 6DE

Contact

01732 875706
larkfieldsales@simonmiller.co.uk
<https://simonmiller.co.uk/>

Agents Note: Whilst every care has been taken to prepare these particulars, they are for guidance purposes only. All measurements are approximate and for general guidance purposes only and whilst every care has been taken to ensure accuracy, they should not be relied upon and potential buyers/tenants are advised to recheck the measurements.

