



## Lime Place

Wouldham, Rochester ME1 3YU

- Perfect First Time Buy!!
- Two Double Bedrooms
  - Open Plan Layout
- Modern And Contemporary Throughout
- Master Bedroom With En Suite
  - Allocated Parking
- Popular 'Peters' Village Location
  - Ready To View NOW!

**Asking Price £245,000 Leasehold**

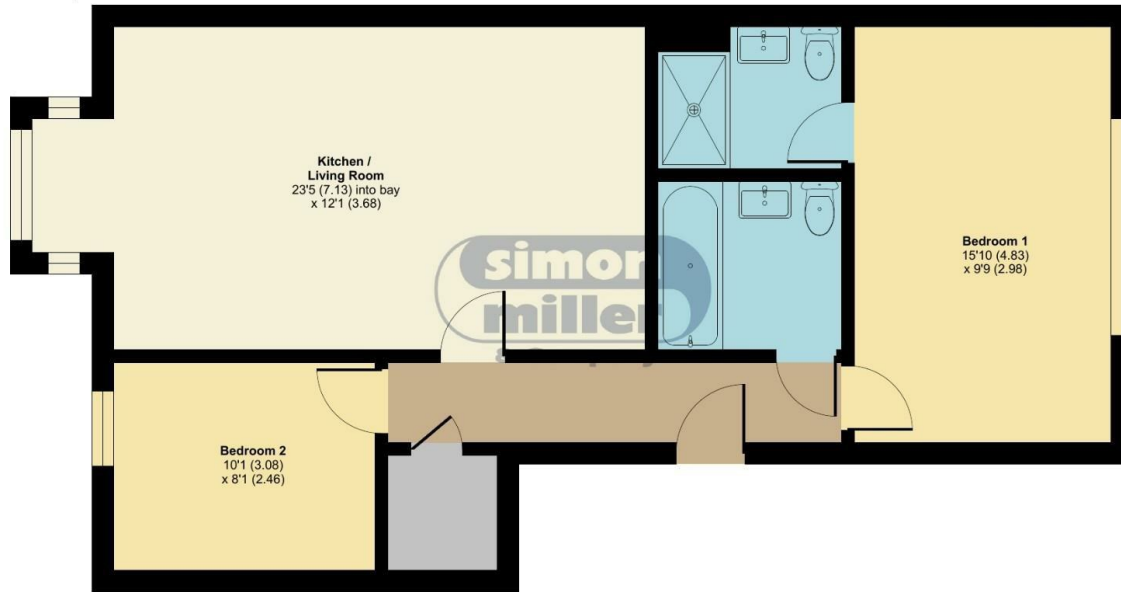
Local Authority  
Council Tax Band C  
EPC Rating B



## Lime Place, Wouldham, Rochester, ME1

Approximate Area = 690 sq ft / 64.1 sq m

For identification only - Not to scale



FIRST FLOOR



Floor plan produced in accordance with RICS Property Measurement Standards incorporating International Property Measurement Standards (IPMS2 Residential). © richecom 2024. Produced for Simon Miller & Company. REF: 1135692

### Mailing Office

777 London Road, Larkfield, Aylesford,  
Kent, ME20 6DE

### Contact

01732 875706  
larkfieldsales@simonmiller.co.uk  
<https://simonmiller.co.uk/>

Agents Note: Whilst every care has been taken to prepare these particulars, they are for guidance purposes only. All measurements are approximate and for general guidance purposes only and whilst every care has been taken to ensure accuracy, they should not be relied upon and potential buyers/tenants are advised to recheck the measurements.

