

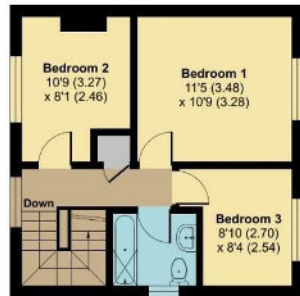


The Avenue , Aylesford ME20 7LE

- Ready To View Now
- Extended Three Bedroom Semi Detached Home
 - EPC - D
 - Open Plan Kitchen / Diner
- Popular 'Greenacres' Development
- CHAIN FREE
- Garage And Driveway
- Downstairs Cloakroom
- Two Reception Rooms
- Ready To View NOW!

Offers In Excess Of £375,000 Freehold

Local Authority
Council Tax Band D
EPC Rating D



FIRST FLOOR



GROUND FLOOR

The Avenue, Aylesford, ME20

Approximate Area = 1053 sq ft / 97.8 sq m

Garage = 284 sq ft / 26.3 sq m

Total = 1337 sq ft / 124.1 sq m

For identification only - Not to scale



Floor plan produced in accordance with RICS Property Measurement Standards incorporating International Property Measurement Standards (IPMS2 Residential). © richcom 2024. Produced for Simon Miller & Company. REF: 1134716

Mailing Office

777 London Road, Larkfield, Aylesford,
Kent, ME20 6DE

Contact

01732 875706
larkfieldsales@simonmiller.co.uk
<https://simonmiller.co.uk/>

Agents Note: Whilst every care has been taken to prepare these particulars, they are for guidance purposes only. All measurements are approximate and for general guidance purposes only and whilst every care has been taken to ensure accuracy, they should not be relied upon and potential buyers/tenants are advised to recheck the measurements.

