



Bannister Way

Leybourne Chase, West Malling ME19 5SA

- GUIDE PRICE: £250,000-£260,000
- Views Over the Local Playing Fields
- Popular Residential Development
 - Close to Local Amenities
- A GROUND Floor Apartment
- En-suite to Master Bedroom
- Allocated Parking to Rear

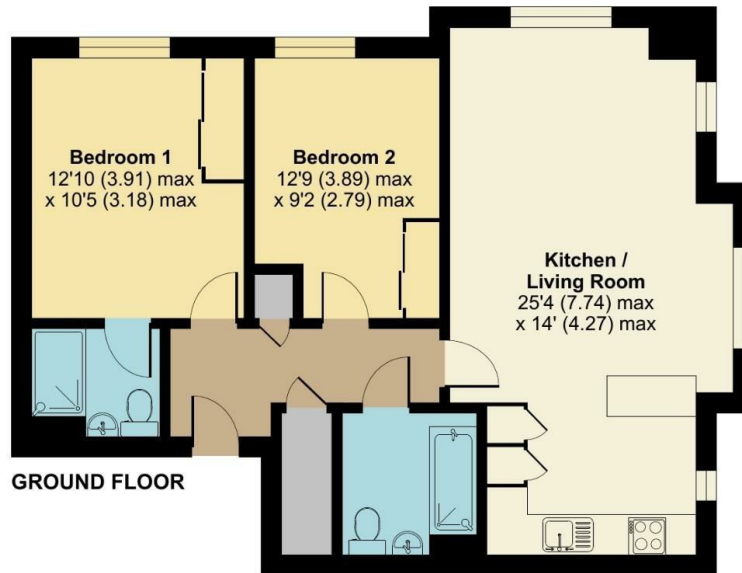
Guide Price £250,000 Leasehold

Local Authority
Council Tax Band C
EPC Rating B



Bannister Way, Leybourne, West Malling, ME19

Approximate Area = 767 sq ft / 71.2 sq m
For identification only - Not to scale



GROUND FLOOR



Floor plan produced in accordance with RICS Property Measurement Standards incorporating International Property Measurement Standards (IPMS2 Residential). © richecom 2024. Produced for Simon Miller & Company. REF: 1140325

Malling Office

777 London Road, Larkfield, Aylesford,
Kent, ME20 6DE

Contact

01732 875706
larkfieldsales@simonmiller.co.uk
<https://simonmiller.co.uk/>

Agents Note: Whilst every care has been taken to prepare these particulars, they are for guidance purposes only. All measurements are approximate and for general guidance purposes only and whilst every care has been taken to ensure accuracy, they should not be relied upon and potential buyers/tenants are advised to recheck the measurements.

