



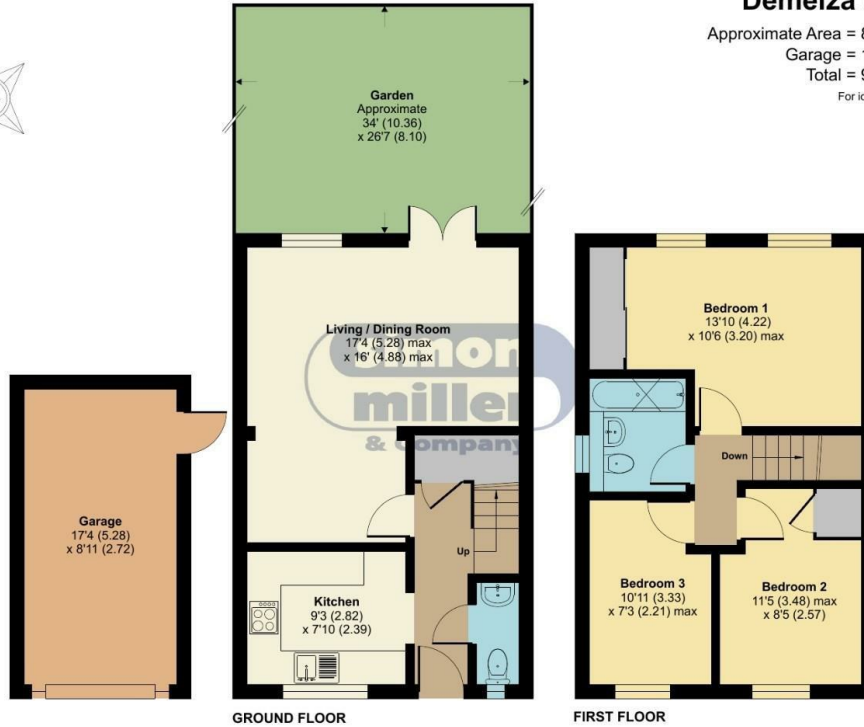
Demelza Close

Cuxton, Rochester ME2 1ED

- GUIDE PRICE: £375,000-£400,000
- Popular Cul-de-sac Development
 - Garage and Driveway
- Good Access to Transport Links
- A Three Bedroom Family Home
- Enclosed Rear Garden with a Usable Outbuilding
- Close to Countryside Walks

Guide Price £375,000 Freehold

Local Authority
Council Tax Band D
EPC Rating C



Demelza Close, ME2

Approximate Area = 822 sq ft / 76.4 sq m
Garage = 156 sq ft / 14.5 sq m
Total = 978 sq ft / 90.8 sq m
For identification only - Not to scale



Floor plan produced in accordance with RICS Property Measurement Standards incorporating International Property Measurement Standards (IPMS2 Residential). © richcom 2024. Produced for Simon Miller & Company. REF: 1135644

Malling Office
777 London Road, Larkfield, Aylesford,
Kent, ME20 6DE

Contact
01732 875706
larkfieldsales@simonmiller.co.uk
<https://simonmiller.co.uk/>

Agents Note: Whilst every care has been taken to prepare these particulars, they are for guidance purposes only. All measurements are approximate and for general guidance purposes only and whilst every care has been taken to ensure accuracy, they should not be relied upon and potential buyers/tenants are advised to recheck the measurements.