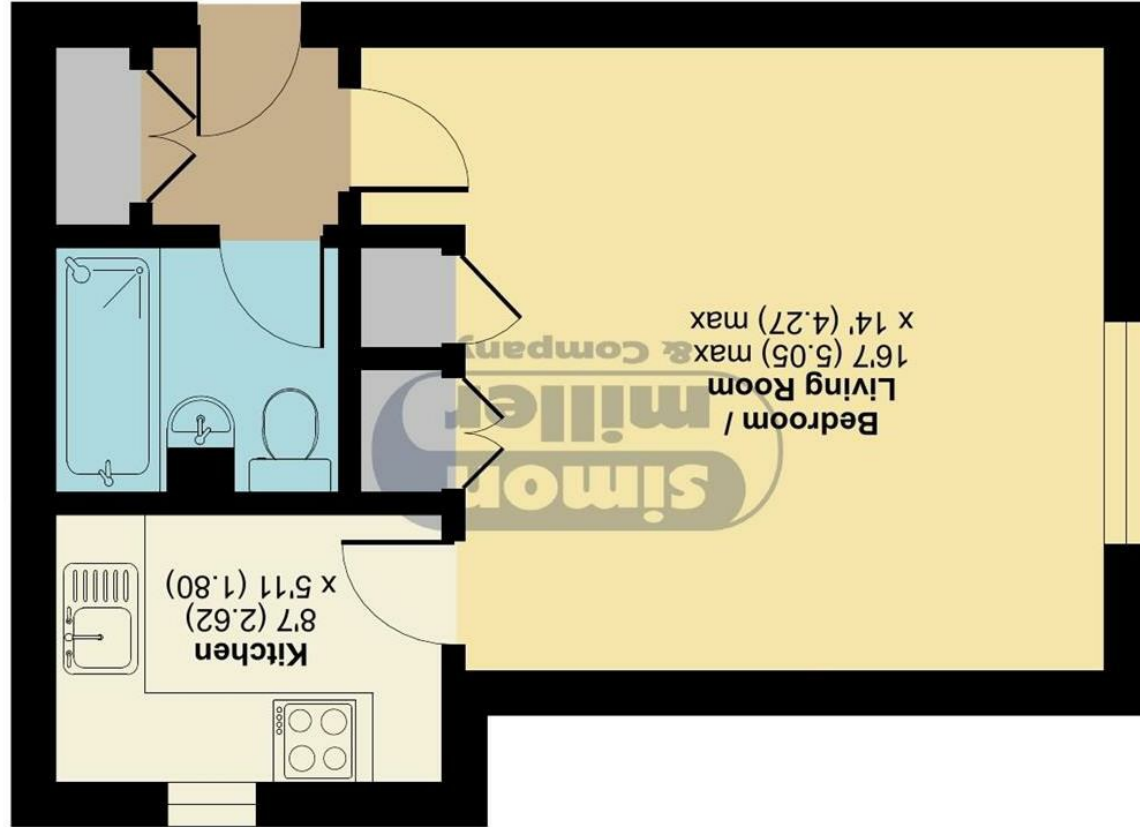


FIRST FLOOR



Victoria Street, Maidstone, ME16
Approximate Area = 350 sq ft / 32.5 sq m
For identification only - Not to scale



37 Victoria Court Victoria Street, Maidstone, ME16
8JZ

£125,000
EPC RATING: D





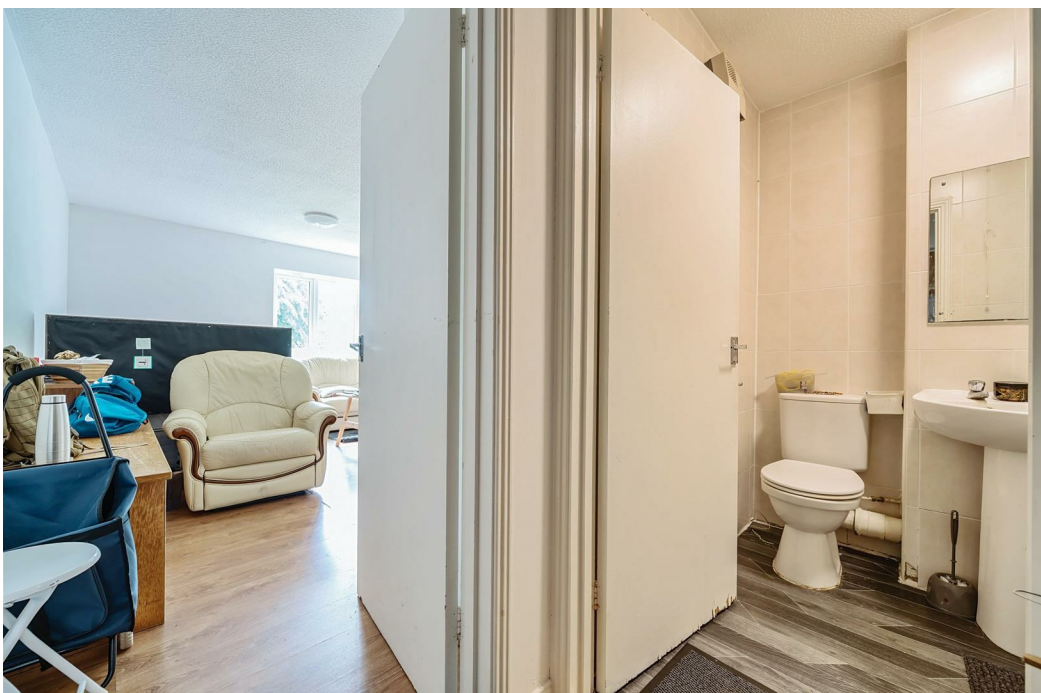
Offered Chain Free, this first floor Studio flat is located just a short walk of Maidstone Town Centre.

The property offers a kitchen area, a modern bathroom and plenty of storage space throughout its 350 sq ft. The property also benefits from secure gated parking.

Maidstone Town centre offers a wide range of shopping and leisure facilities, with two mainline train stations offering fantastic links up into London.

MATERIAL INFORMATION

Leasehold
Council Tax Band A
EPC Report D



- First Floor Studio Flat • Secure Gated Development • Allocated Parking • Walking distance of Town Centre and Mainline Train Stations • Offered CHAIN FREE • Ideal First Time Or Buy To Let Purchase

Agents Note: All dimensions are approximate and quoted for guidance only. Reference to appliances, fixtures, fittings and services does not imply that they are necessarily in good condition, fit the purpose or are in working order. Interested parties are advised to obtain verification from their Solicitors as to the Freehold/Leasehold status of the property and confirmation regarding the condition of any fixtures and fittings included in the sale.

11, COLMAN HOUSE, MAIDSTONE, KENT, ME14 1DJ | 01622 691255 | MAIDSTONESALES@SIMONMILLER.CO.UK