



## Wheeler Street

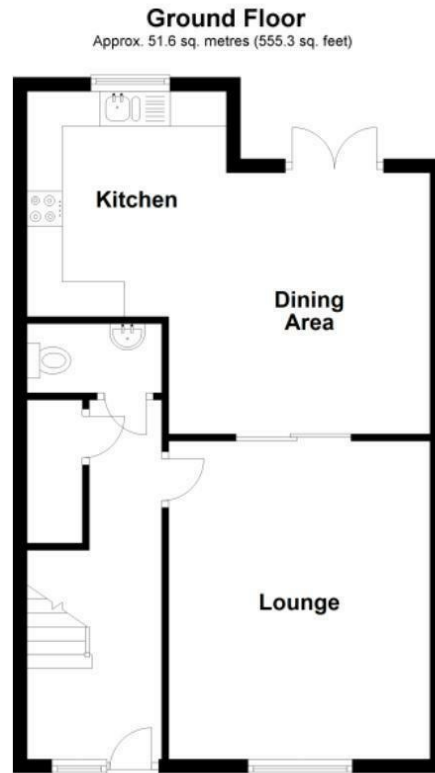
Headcorn, Ashford TN27 9SH

- 3 Double bedrooms
- Open plan Lounge & Diner
- Kitchen appliances included
- Close to local amenities
  - Carport
- 2 Ensuite bathrooms
- Spacious property
- Beautiful location
  - Garden
- Available beginning of April!!

**£1,600 PCM**



Local Authority Maidstone  
Borough Council  
Council Tax Band E  
EPC Rating



**Lettings Office**  
Lettings Division, 779 London Road,  
Larkfield, Aylesford, Kent, ME20 6DE

**Contact**  
01732 875777  
[lettings@simonmiller.co.uk](mailto:lettings@simonmiller.co.uk)  
<https://simonmiller.co.uk/landlo/services/>

Agents Note: Whilst every care has been taken to prepare these particulars, they are for guidance purposes only. All measurements are approximate and for general guidance purposes only and whilst every care has been taken to ensure accuracy, they should not be relied upon and potential buyers/tenants are advised to recheck the measurements.