



Cottenham Close

East Malling, West Malling ME19 6BY

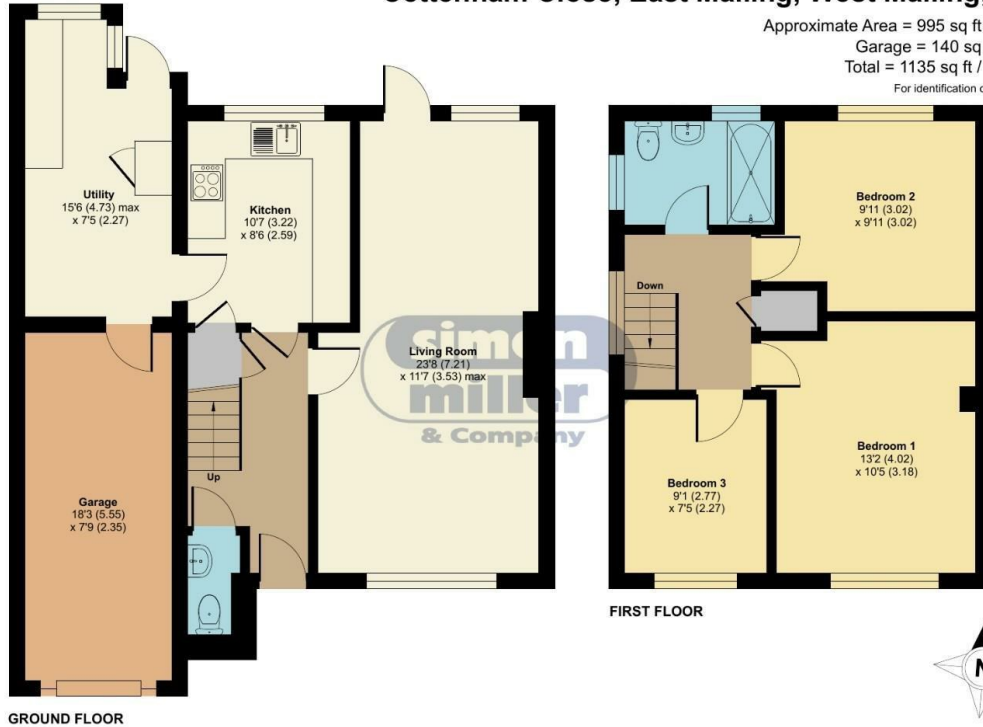
- Chain Free!!!
- Through Lounge / Diner
- Large Utility Room
- Three Double Bedrooms
- Modern Fitted Kitchen
- Downstairs Cloakroom

£400,000 Freehold

Local Authority
Council Tax Band D
EPC Rating D

Cottenham Close, East Malling, West Malling, ME19

Approximate Area = 995 sq ft / 92.4 sq m
Garage = 140 sq ft / 13 sq m
Total = 1135 sq ft / 105.4 sq m
For identification only - Not to scale



Floor plan produced in accordance with RICS Property Measurement Standards incorporating International Property Measurement Standards (IPMS2 Residential). © nichecom 2024. Produced for Simon Miller & Company. REF: 1148978



Malling Office
777 London Road, Larkfield, Aylesford,
Kent, ME20 6DE

Contact
01732 875706
larkfieldsales@simonmiller.co.uk
<https://simonmiller.co.uk/>

Agents Note: Whilst every care has been taken to prepare these particulars, they are for guidance purposes only. All measurements are approximate and for general guidance purposes only and whilst every care has been taken to ensure accuracy, they should not be relied upon and potential buyers/tenants are advised to recheck the measurements.