



The Lakes , Larkfield ME20 6GQ

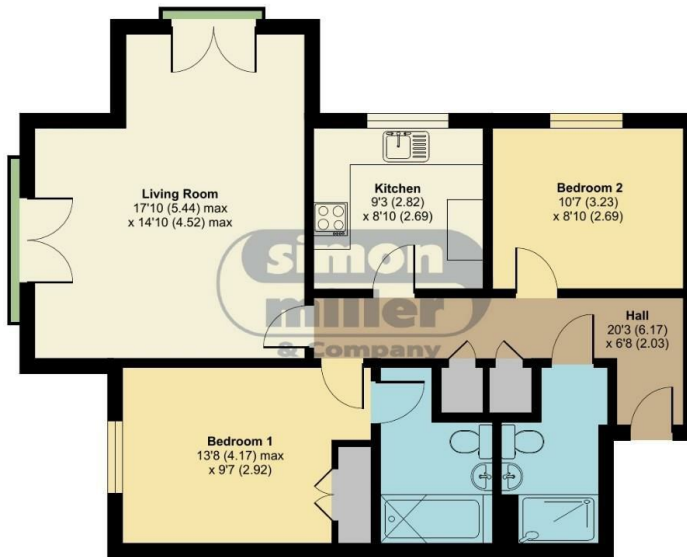
- CHAIN FREE!!
- Views Of Leybourne Lakes
- Master Bedroom With En-Suite
- Two Double Bedrooms
- Double Aspect Juliet Balcony's
- Allocated Parking

Offers In Excess Of £240,000 Leasehold

Local Authority
Council Tax Band D
EPC Rating B

The Lakes, Larkfield, Aylesford, ME20

Approximate Area = 786 sq ft / 73 sq m
For identification only - Not to scale



FIRST FLOOR



Floor plan produced in accordance with RICS Property Measurement Standards incorporating International Property Measurement Standards (IPMS2 Residential). © nichecom 2024. Produced for Simon Miller & Company. REF: 1160699

Mailing Office

777 London Road, Larkfield, Aylesford,
Kent, ME20 6DE

Contact

01732 875706
larkfieldsales@simonmiller.co.uk
<https://simonmiller.co.uk/>

Agents Note: Whilst every care has been taken to prepare these particulars, they are for guidance purposes only. All measurements are approximate and for general guidance purposes only and whilst every care has been taken to ensure accuracy, they should not be relied upon and potential buyers/tenants are advised to recheck the measurements.

