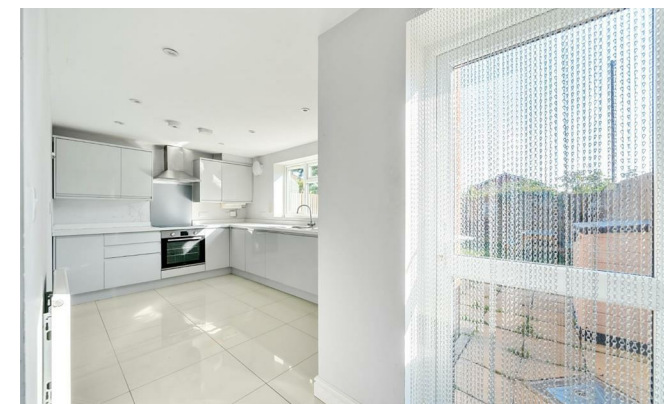




Norman Road , Snodland ME6 5JD

- GUIDE PRICE: £325,000-£335,000
- CHAIN FREE
- Open Plan Living
- South Facing Rear Garden
- Private Driveway
- Downstairs Cloakroom
- Modern Kitchen With Integrated Appliances
- Three Double Bedrooms

Guide Price £325,000 Freehold

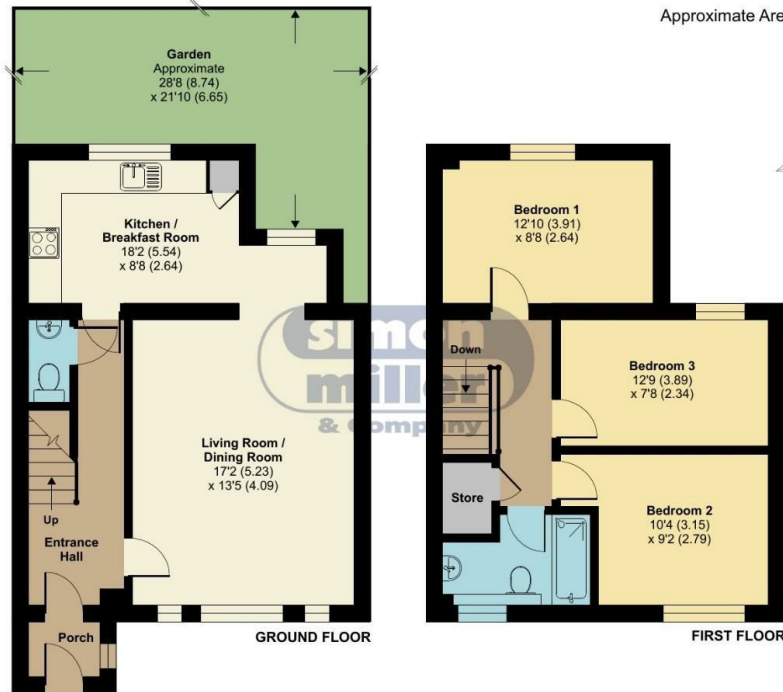


Local Authority
Council Tax Band C
EPC Rating C

Norman Road, Snodland, ME6

Approximate Area = 978 sq ft / 90.8 sq m

For identification only - Not to scale



Floor plan produced in accordance with RICS Property Measurement Standards incorporating International Property Measurement Standards (IPMS2 Residential). © nrichecom 2024. Produced for Simon Miller & Company. REF: 1167969

Malling Office

777 London Road, Larkfield, Aylesford,
Kent, ME20 6DE

Contact

01732 875706
larkfieldsales@simonmiller.co.uk
<https://simonmiller.co.uk/>

Agents Note: Whilst every care has been taken to prepare these particulars, they are for guidance purposes only. All measurements are approximate and for general guidance purposes only and whilst every care has been taken to ensure accuracy, they should not be relied upon and potential buyers/tenants are advised to recheck the measurements.