



Lavender Road

East Malling, West Malling ME19 6EE

- Recently Refurbished Three Bedroom Semi Detached Family Home
- Large Private Driveway For Multiple Vehicles
 - SOUTH Facing Rear Garden
 - New Windows And Front Door
- Open Plan Kitchen / Diner
- Two Double Bedrooms
- Within Close Proximity Of Schools And Amenities
- Ready To View NOW!

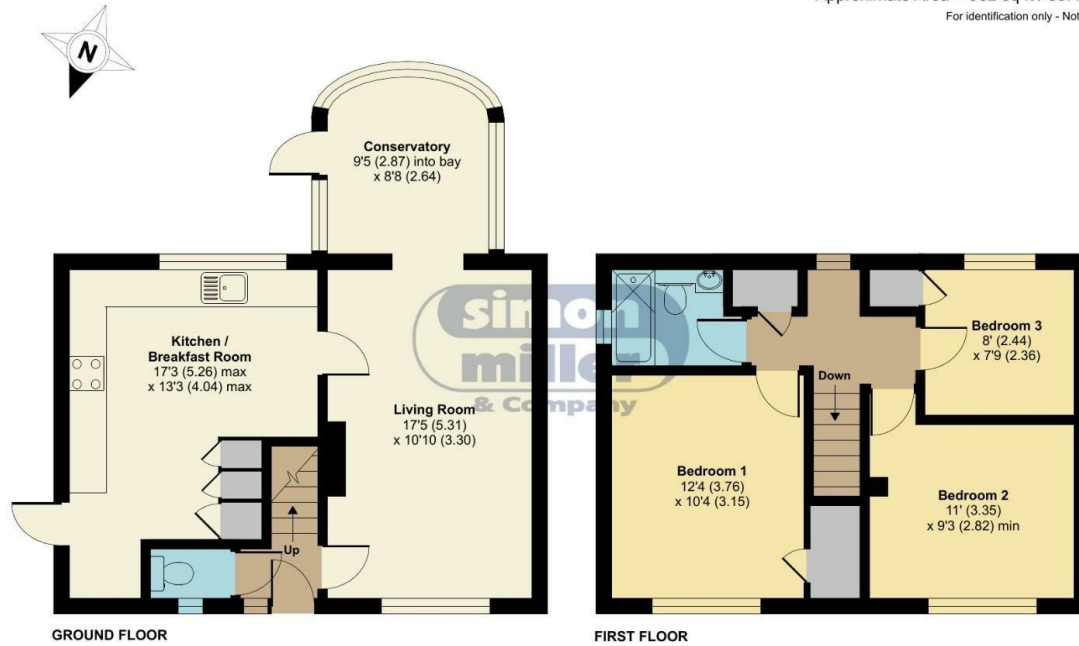
Offers In Excess Of £385,000 Freehold

Local Authority
Council Tax Band C
EPC Rating C

Lavender Road, ME19

Approximate Area = 962 sq ft / 89.4 sq m

For identification only - Not to scale



 Floor plan produced in accordance with RICS Property Measurement Standards incorporating International Property Measurement Standards (IPMS2 Residential). © nrichecom 2024. Produced for Simon Miller & Company. REF: 1164565

Malling Office

777 London Road, Larkfield, Aylesford,
Kent, ME20 6DE

Contact

01732 875706
larkfieldsales@simonmiller.co.uk
<https://simonmiller.co.uk/>

Agents Note: Whilst every care has been taken to prepare these particulars, they are for guidance purposes only. All measurements are approximate and for general guidance purposes only and whilst every care has been taken to ensure accuracy, they should not be relied upon and potential buyers/tenants are advised to recheck the measurements.