

PERIOD HOMES

By Simon Miller



Sheldon Court

Ditton, Aylesford ME20 6AL

- Guide Price £700,000 - £725,000
- Flexible Accommodation Throughout
- Exposed Beams, Timbers and Brickwork
 - A MUST VIEW
- A FOUR Bedroom Converted Barn
- Refurbished and Improved Interior
- Parking for Numerous Vehicles

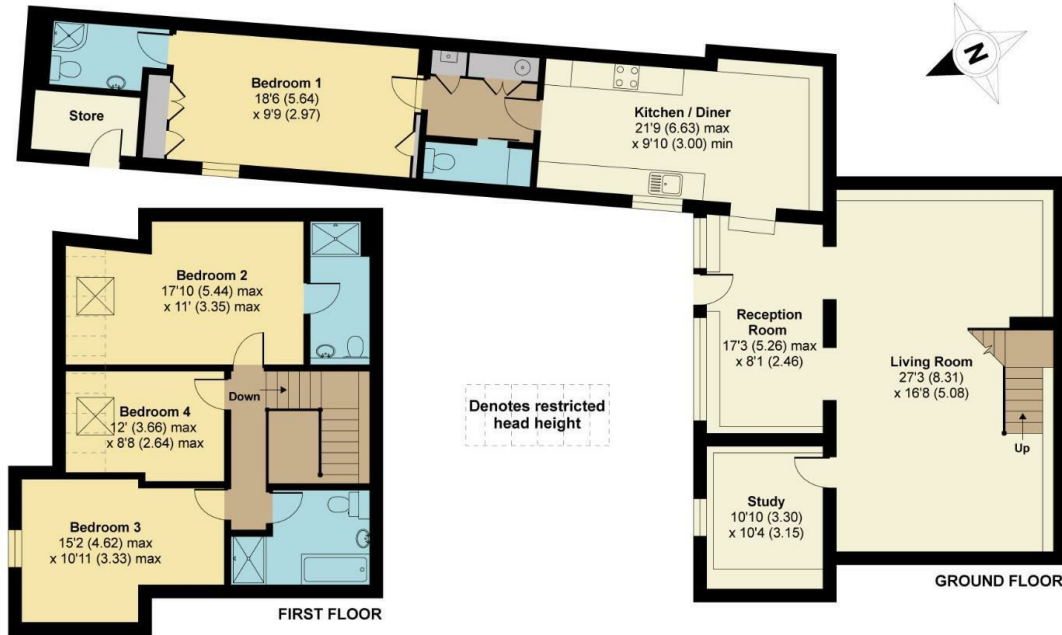
Guide Price £700,000 Freehold



Local Authority
Council Tax Band G
EPC Rating C

Sheldon Court, Aylesford, ME20

APPROX. GROSS INTERNAL FLOOR AREA 1906 SQ FT 177 SQ METRES (EXCLUDES RESTRICTED HEAD HEIGHT & STORE)



Whilst every attempt has been made to ensure the accuracy of the floor plan contained here, measurements of doors, windows and rooms are approximate and no responsibility is taken for any error, omission or misstatement. These plans are for representation purposes only as defined by RICS Code of Measuring Practice and should be used as such by any prospective purchaser. Specifically no guarantee is given on the total square footage of the property if quoted on this plan. Any figure given is for initial guidance only and should not be relied on as a basis of valuation.

Copyright nichecom.co.uk 2020 Produced for Simon Miller & Company REF : 586842

Period Homes by Simon Miller Office
Weald, 5 High Street, Headcorn, Ashford,
Kent, TN27 9NH

Contact

01622 850888
admin@periodhomesbysimonmiller.co.uk
<https://simonmiller.co.uk/period-homes/>

Agents Note: Whilst every care has been taken to prepare these particulars, they are for guidance purposes only. All measurements are approximate and for general guidance purposes only and whilst every care has been taken to ensure accuracy, they should not be relied upon and potential buyers/tenants are advised to recheck the measurements.

