



Medina Road

Ditton, Aylesford ME20 6DN

- Recently Refurbished Corner Plot Three Bedroom Semi Detached Home
 - Large Garden
- Recently Painted Exterior
- Separate Utility Room
- Two Reception Rooms
- Downstairs Cloakroom
- Planning Permission Granted For Driveway
- Ready to View Now!

£400,000 Freehold

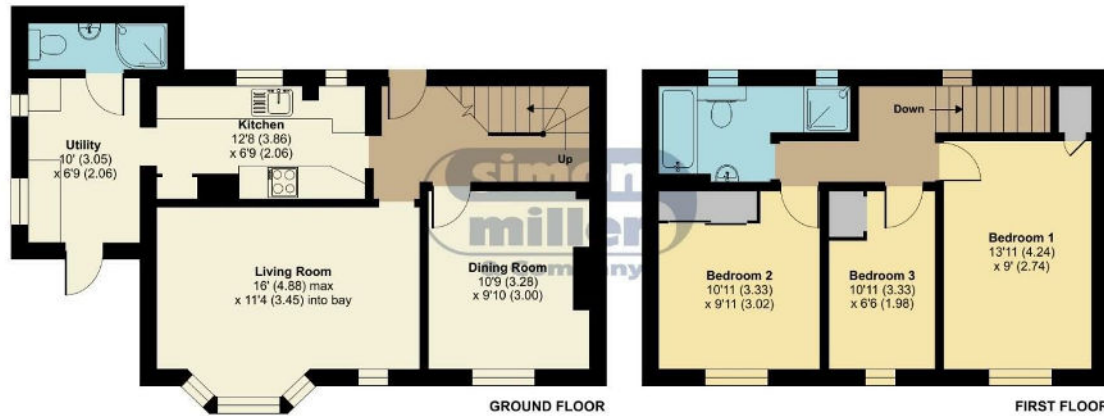
Local Authority
Council Tax Band C
EPC Rating C


Medina Road, Ditton, Aylesford, ME20

Approximate Area = 1020 sq ft / 94.8 sq m

For identification only - Not to scale

Denotes restricted
head height



 Floor plan produced in accordance with RICS Property Measurement Standards incorporating International Property Measurement Standards (IPMS2 Residential). © richcom 2024. Produced for Simon Miller & Company. REF: 1185547

Malling Office

777 London Road, Larkfield, Aylesford,
Kent, ME20 6DE

Contact

01732 875706
larkfieldsales@simonmiller.co.uk
<https://simonmiller.co.uk/>

Agents Note: Whilst every care has been taken to prepare these particulars, they are for guidance purposes only. All measurements are approximate and for general guidance purposes only and whilst every care has been taken to ensure accuracy, they should not be relied upon and potential buyers/tenants are advised to recheck the measurements.