

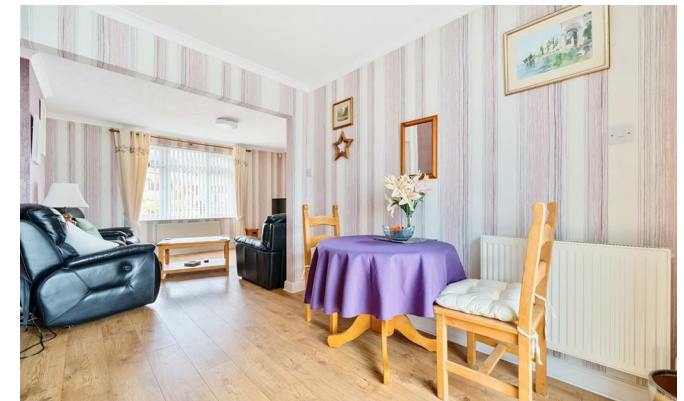


## Courtlands

Teston, Maidstone ME18 5AS

- An Extended FOUR Bedroom Bungalow
  - Cul-de-sac Position
  - Popular Village location
- Additional Bedroom with En-suite
- Wonderful Views over the Kent Countryside
- Vacant Possession Available

**£485,000 Freehold**





Local Authority  
Council Tax Band E  
EPC Rating D

## Courtlands, Teston, Maidstone, ME1

Approximate Area = 1256 sq ft / 116.6 sq m  
Outbuilding = 142 sq ft / 13.1 sq m  
Total = 1398 sq ft / 129.7 sq m  
For identification only - Not to scale



Floor plan produced in accordance with RICS Property Measurement Standards incorporating International Property Measurement Standards (IPMS2 Residential). © nichecom 2024. Produced for Simon Miller & Company. REF: 1164333

### Malling Office

777 London Road, Larkfield, Aylesford,  
Kent, ME20 6DE

### Contact

01732 875706  
larkfieldsales@simonmiller.co.uk  
<https://simonmiller.co.uk/>

Agents Note: Whilst every care has been taken to prepare these particulars, they are for guidance purposes only. All measurements are approximate and for general guidance purposes only and whilst every care has been taken to ensure accuracy, they should not be relied upon and potential buyers/tenants are advised to recheck the measurements.

