



Fielding Drive

Larkfield, Aylesford ME20 6TY

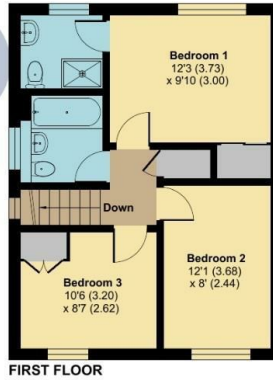
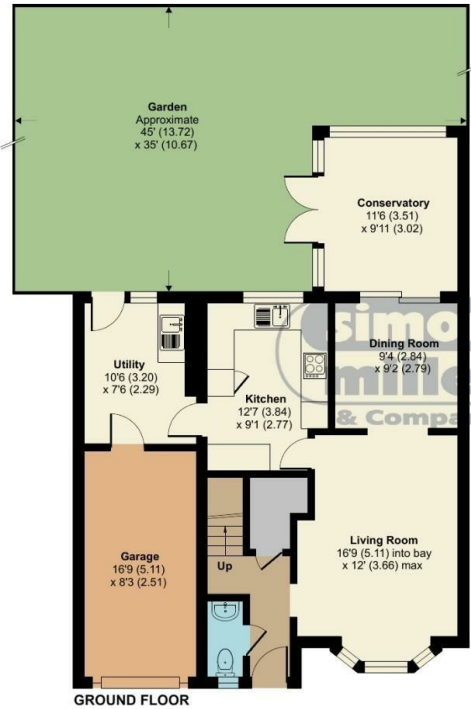
- Three Double Bedroom Detached Family Home
- Private Driveway And Garage
- South East Facing Rear Garden
- Conservatory
- Two Reception Rooms
- Considered One Of The Most Popular Roads On 'The Poets'
- Separate Utility Room
- Master Bedroom With En Suite

£499,999 Freehold

Local Authority
Council Tax Band E
EPC Rating D

Fielding Drive, Larkfield, Aylesford, ME20

Approximate Area = 1176 sq ft / 109.2 sq m
Garage = 140 sq ft / 13 sq m
Total = 1316 sq ft / 122.2 sq m
For identification only - Not to scale



Floor plan produced in accordance with RICS Property Measurement Standards incorporating International Property Measurement Standards (IPMS2 Residential). © richcom 2024. Produced for Simon Miller & Company. REF: 1169534



Malling Office
777 London Road, Larkfield, Aylesford,
Kent, ME20 6DE

Contact
01732 875706
larkfieldsales@simonmiller.co.uk
<https://simonmiller.co.uk/>

Agents Note: Whilst every care has been taken to prepare these particulars, they are for guidance purposes only. All measurements are approximate and for general guidance purposes only and whilst every care has been taken to ensure accuracy, they should not be relied upon and potential buyers/tenants are advised to recheck the measurements.