



Maple Close

Larkfield, Aylesford ME20 6NG

- Three Bedroom Semi-Detached Family Home
 - Downstairs Cloakroom
- Situated On The Popular 'Trees' Estate
 - Front And Back Gardens
- Two Reception Rooms
- Recently Redecorated
- Driveway And Garage
- WEST Facing Rear Garden

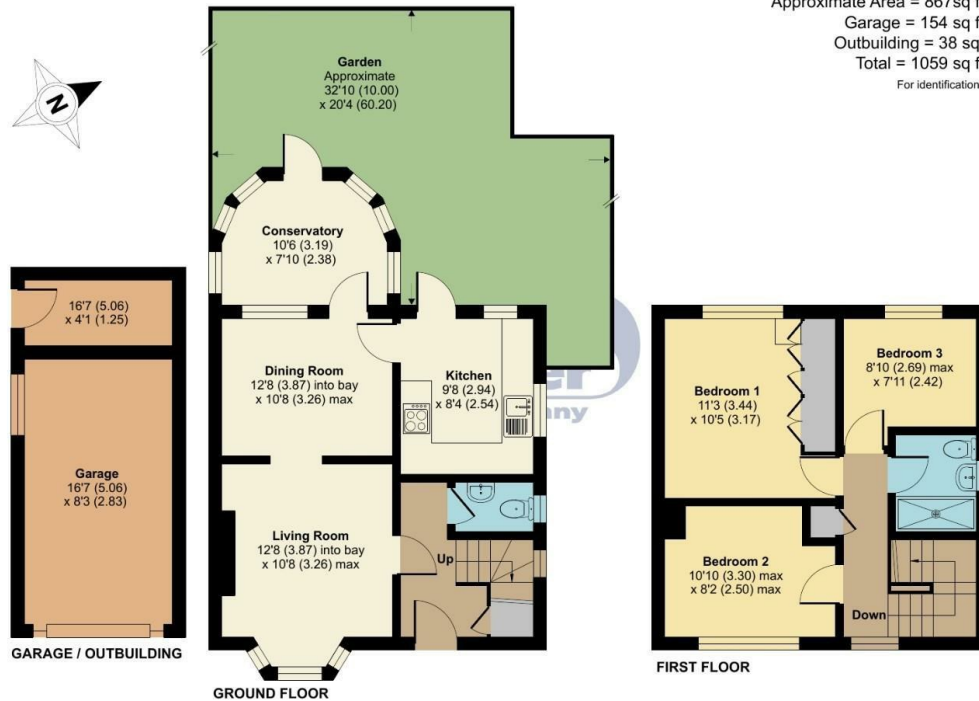
£390,000 Freehold

Local Authority
Council Tax Band D
EPC Rating D

Maple Close, Larkfield, Aylesford, ME20

Approximate Area = 867sq ft / 80.5 sq m
Garage = 154 sq ft / 14.3 sq m
Outbuilding = 38 sq ft / 3.5 sq m
Total = 1059 sq ft / 98.3 sq m

For identification only - Not to scale



Floor plan produced in accordance with RICS Property Measurement Standards incorporating International Property Measurement Standards (IPMS2 Residential). © nichecom 2024. Produced for Simon Miller & Company. REF: 1177002

Malling Office

777 London Road, Larkfield, Aylesford,
Kent, ME20 6DE

Contact

01732 875706
larkfieldsales@simonmiller.co.uk
<https://simonmiller.co.uk/>

Agents Note: Whilst every care has been taken to prepare these particulars, they are for guidance purposes only. All measurements are approximate and for general guidance purposes only and whilst every care has been taken to ensure accuracy, they should not be relied upon and potential buyers/tenants are advised to recheck the measurements.

