



Lunsford Lane

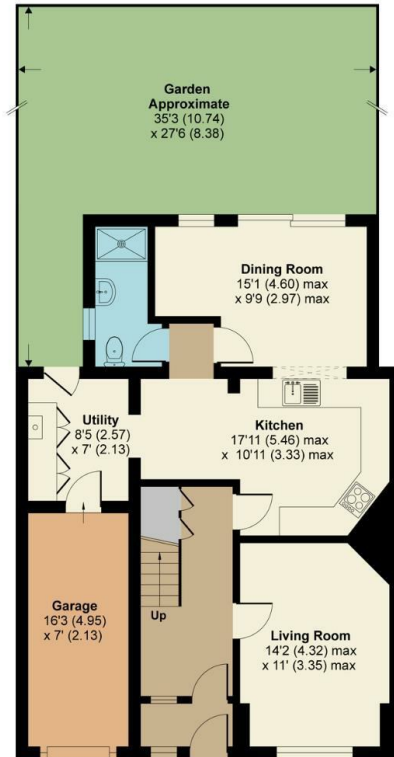
Larkfield, Aylesford ME20 6HZ

- Large Driveway & Integrated Garage
 - Heavily Extended
 - Utility Room
- Open Planned Kitchen
- West Facing Garden
- Downstairs Shower Room
- Four Double Bedrooms

Offers In The Region Of £475,000 Freehold



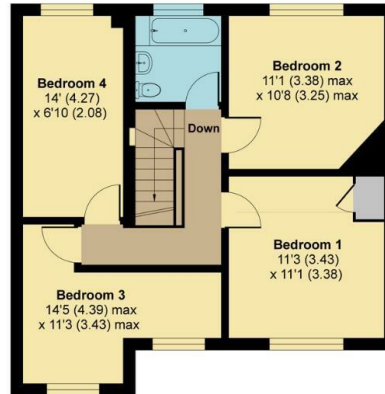
Local Authority
Council Tax Band D
EPC Rating D



GROUND FLOOR

Lunsford Lane, Larkfield, Aylesford, ME20

Approximate Area = 1410 sq ft / 131 sq m (includes garage)
For identification only - Not to scale



FIRST FLOOR



Floor plan produced in accordance with RICS Property Measurement Standards incorporating International Property Measurement Standards (IPMS2 Residential). © nichecom 2020. Produced for Simon Miller & Company. REF: 643681

Mailing Office

777 London Road, Larkfield, Aylesford,
Kent, ME20 6DE

Contact

01732 875706
larkfieldsales@simonmiller.co.uk
<https://simonmiller.co.uk/>

Agents Note: Whilst every care has been taken to prepare these particulars, they are for guidance purposes only. All measurements are approximate and for general guidance purposes only and whilst every care has been taken to ensure accuracy, they should not be relied upon and potential buyers/tenants are advised to recheck the measurements.