

PERIOD HOMES

By Simon Miller



Linton Road

Loose, Maidstone ME15 0AB

- GUIDE PRICE £800,000 - £825,000
- Five Bedrooms
- Mature Grounds With Wide Variety Of Trees Approximately 1 Acre Overall, Three Gardens With Enclosed Spaces
- Secluded Position in the Loose Valley
- Private Road With Shared Access
- Detached Victorian Family Home
- Kitchen/Breakfast Room
- Family Bathroom, En-Suite & Ground Floor Shower Rooms
- Offered Chain Free
- Three Reception Rooms

Guide Price £800,000 Freehold

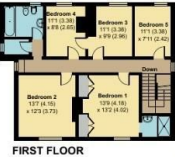


Local Authority
Council Tax Band G
EPC Rating



Linton Road, Loose, Maidstone, ME15

Approximate Area = 2113 sq ft / 196.3 sq m
For identification only - Not to scale



Floor plan produced in accordance with RICS Property Measurement Standards incorporating International Property Measurement Standards (IPMS2 Residential). © richecom 2024. Produced for Simon Miller & Company. REF: 1175470

Period Homes by Simon Miller Office
Weald, 5 High Street, Headcorn, Ashford,
Kent, TN27 9NH

Contact
01622 850888
admin@periodhomesbysimonmiller.co.uk
<https://simonmiller.co.uk/period-homes/>

Agents Note: Whilst every care has been taken to prepare these particulars, they are for guidance purposes only. All measurements are approximate and for general guidance purposes only and whilst every care has been taken to ensure accuracy, they should not be relied upon and potential buyers/tenants are advised to recheck the measurements.

