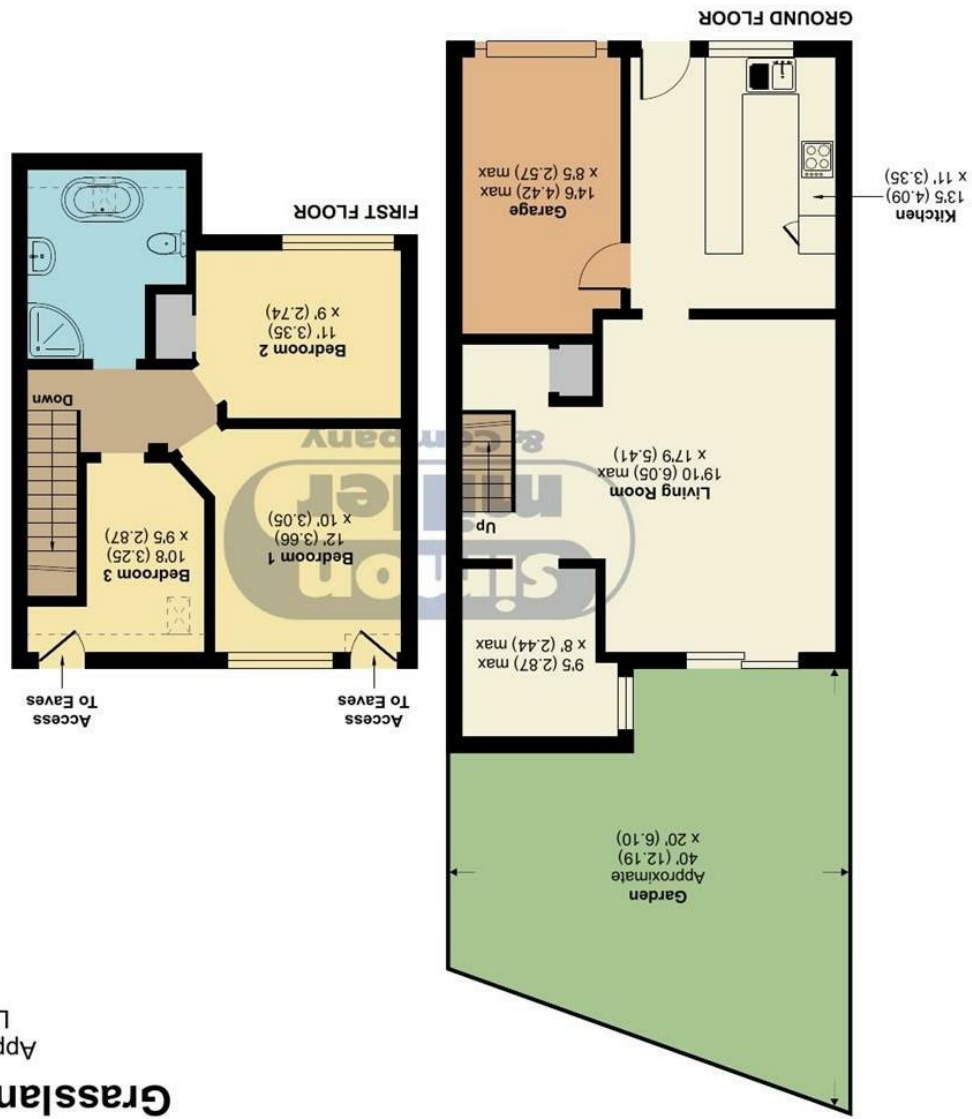


Floor plan produced in accordance with RICS Property Measurement Standards incorporating International Property Measurement Standards (IPMS2 Residential). © ndhcom 2024. REF: 1164955



Grasslands, Maidstone, ME17

Approximate Area = 984 sq ft / 91.4 sq m
 Limited Use Area(s) = 21 sq ft / 2 sq m
 Garage = 124 sq ft / 11.5 sq m
 Total = 1129 sq ft / 104.9 sq m

For identification only - Not to scale

Denotes restricted head height

8 Grasslands, Langley, ME17 3JJ

Asking Price £350,000
EPC RATING: C





Nestled in the heart of Langley, this mid-terraced family home is a true gem waiting to be discovered. The property has been fully refurbished throughout and offers a perfect blend of comfort and style.

Built in the late 1960s, this home exudes character and warmth, making it a delightful place to create lasting memories. The spacious garage provides ample storage space for all your needs and provides further opportunity to increase the living space. (subject to planning permission)

Situated in an idyllic cul-de-sac in the sought-after Langley area, this property provides a peaceful retreat from the hustle and bustle of everyday life. The recent refurbishment to a high standard ensures that every corner of this home sparkles with a fresh and modern appeal.

Deceptively spacious, this three-bedroom property is perfect for families looking for a comfortable and inviting space to call their own. Don't miss the opportunity to make this house your home and enjoy the best of Langley living in this charming abode.

MATERIAL INFORMATION

Freehold
Council Tax Band C
EPC Report C



- Three Bedroom Mid Terraced Family Home • Garage & Off Street Parking • Fully Refurbished Throughout To A High Standard • Idyllic Cul De Sac • Popular Langley Location • Deceptively Spacious • Close Proximity To Leeds Castle And Scenic Dog Walks • Ideal For First Time Buyers

Agents Note: All dimensions are approximate and quoted for guidance only. Reference to appliances, fixtures, fittings and services does not imply that they are necessarily in good condition, fit the purpose or are in working order. Interested parties are advised to obtain verification from their Solicitors as to the Freehold/Leasehold status of the property and confirmation regarding the condition of any fixtures and fittings included in the sale.

11, COLMAN HOUSE, MAIDSTONE, KENT, ME14 1DJ | 01622 691255 | MAIDSTONESALES@SIMONMILLER.CO.UK