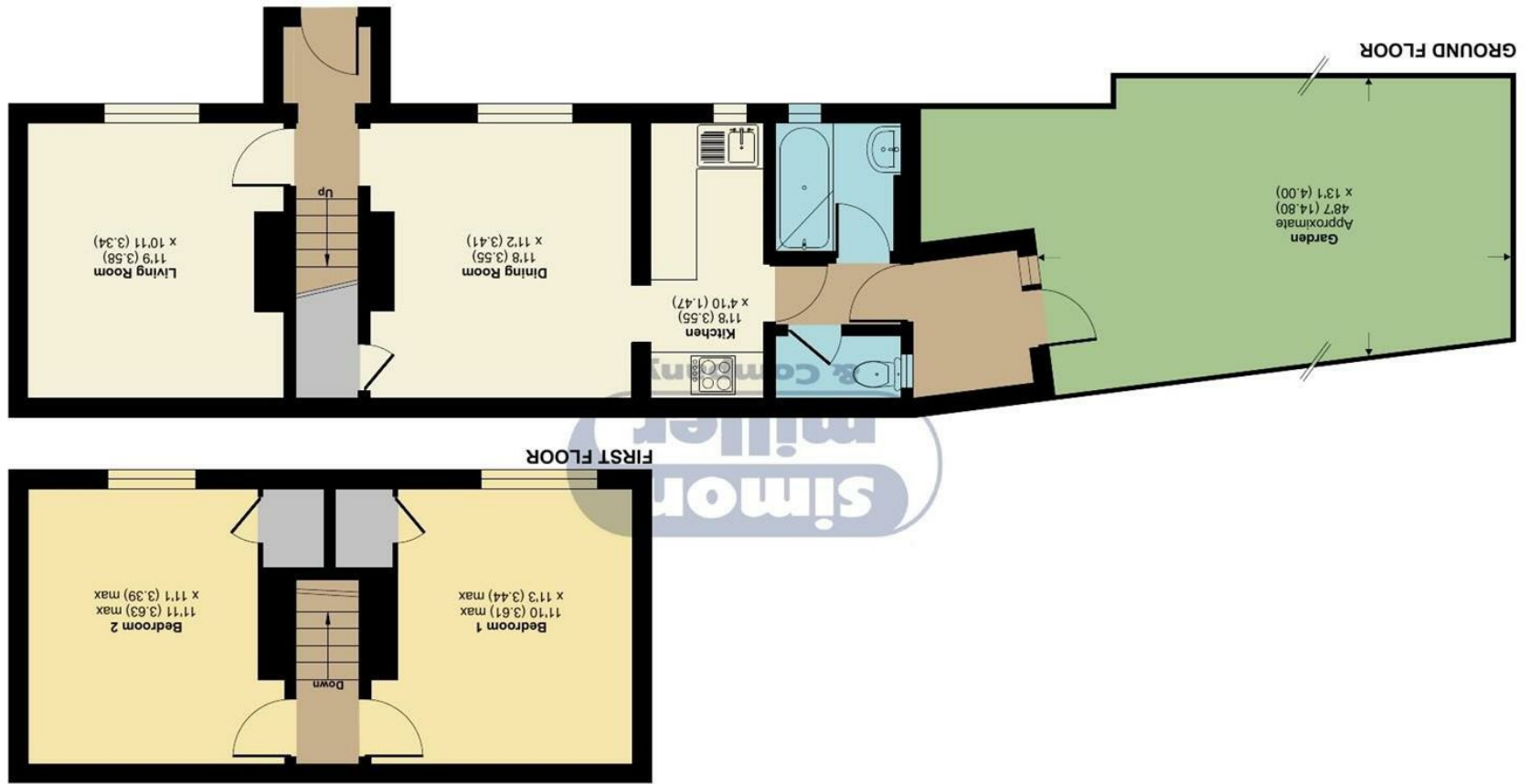


Floor plan produced in accordance with RICS Property Measurement Standards incorporating International Property Measurement Standards (IPMS2 Residential). © ndhcom 2024. Produced for Simon Miller & Company. REF: 1166263



Fountain Lane, Maidstone, ME16
Approximate Area = 788 sq ft / 73.2 sq m
For identification only - Not to scale

13 Fountain Lane, Maidstone, ME16 9AR

Guide Price £220,000
EPC RATING: D





GUIDE PRICE: £220,000-£230,000

Located on Fountain Lane in Maidstone, is this charming Victorian end-terrace house. Boasting two bedrooms and two inviting reception rooms, this property offers a perfect blend of comfort and character.

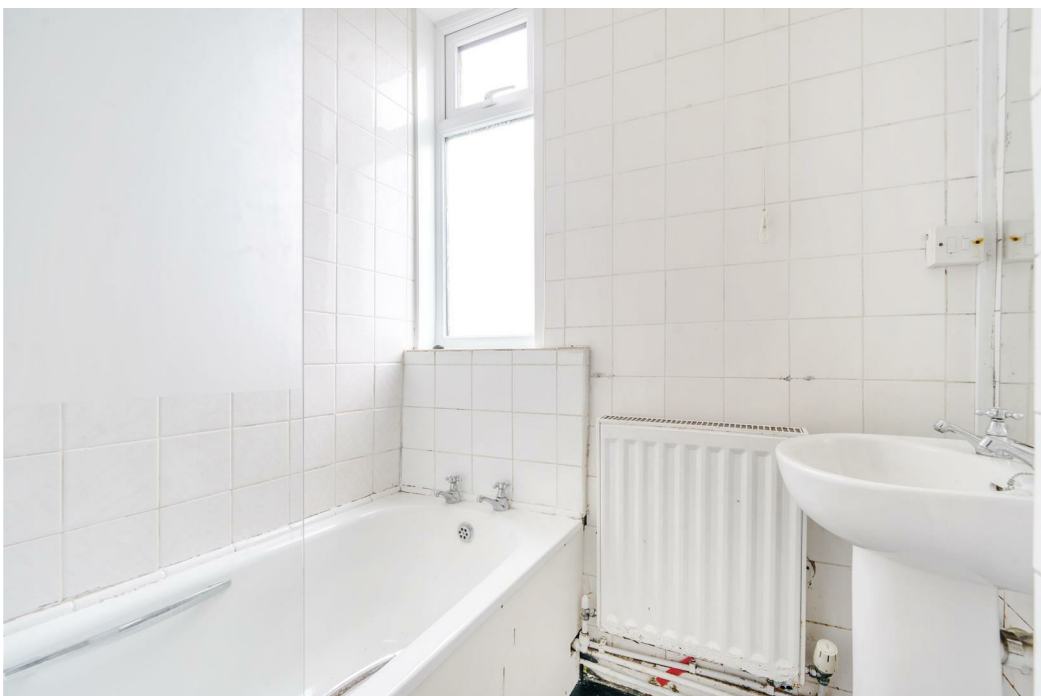
Located in the sought-after Barming area close to Maidstone Hospital, this home provides convenient access to local amenities and shops, making daily errands a breeze. Whether you're a first-time buyer looking for a cozy abode to call your own or an investor seeking a lucrative buy-to-let opportunity, this property ticks all the boxes.

With a total of 788 sq ft to play with, there's ample space to unleash your creativity and transform this house into your dream home. The traditional Victorian architecture adds a touch of elegance, while the end-terrace position ensures added privacy and tranquillity.

Don't miss out on the chance to own a piece of Maidstone's history in this delightful two-bedroom property. Book a viewing today and let the endless possibilities of this charming home capture your heart.

MATERIAL INFORMATION

Freehold
Council Tax Band C
EPC Report D



• Two Bedroom End Of Terrace Home • Two Reception Rooms • Situated In The Popular Barming Location • Close To Maidstone Hospital • Easy Access To Local Shops & Amenities • Ideal First Time Buyer Or Buy To Let Investment • GUIDE PRICE: £220,000-£230,000

Agents Note: All dimensions are approximate and quoted for guidance only. Reference to appliances, fixtures, fittings and services does not imply that they are necessarily in good condition, fit the purpose or are in working order. Interested parties are advised to obtain verification from their Solicitors as to the Freehold/Leasehold status of the property and confirmation regarding the condition of any fixtures and fittings included in the sale.

11, COLMAN HOUSE, MAIDSTONE, KENT, ME14 1DJ | 01622 691255 | MAIDSTONESALES@SIMONMILLER.CO.UK