

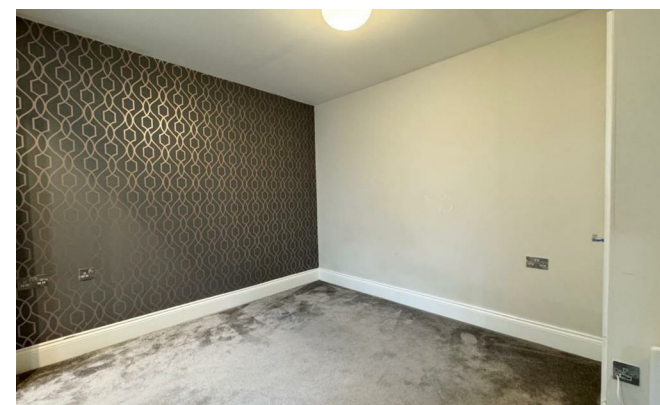
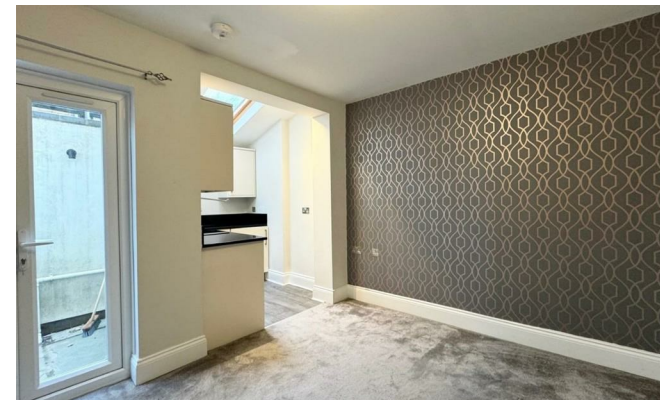


21 Brewer Street

, Maidstone ME14 1RU

- Modern and Convenient One Bedroom Flat
 - Small Private Courtyard
- Close to All Local Amenities and Train Station
- Modern Kitchen with Integrated Appliances
 - Situated in Maidstone Town Centre
 - Property is Available Immediately!

£975



Local Authority
Council Tax Band A
EPC Rating C



Lettings Office

Lettings Division, 779 London Road,
Larkfield, Aylesford, Kent, ME20 6DE

Contact

01732 875777
lettings@simonmiller.co.uk
<https://simonmiller.co.uk/landlo>
services/

Agents Note: Whilst every care has been taken to prepare these particulars, they are for guidance purposes only. All measurements are approximate and for general guidance purposes only and whilst every care has been taken to ensure accuracy, they should not be relied upon and potential buyers/tenants are advised to recheck the measurements.