



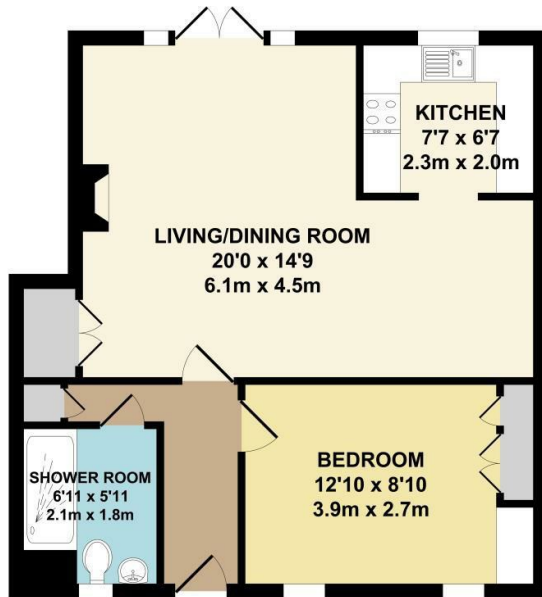
## Nevill Court

, West Malling ME19 6HZ

- A GROUND FLOOR Retirement Apartment
- OWN Patio Area to Rear, Backing onto the Communal Gardens
- One Parking Space
- Refurbished and Upgraded Throughout
- Walking Distance To West Malling High Street
- NO ONWARD CHAIN

**Offers In The Region Of £250,000 Leasehold**

Local Authority  
Council Tax Band C  
EPC Rating C



APPROX. FLOOR AREA  
514 SQ.FT.  
(47.73 SQ.M.)

TOTAL APPROX. FLOOR AREA 514 SQ.FT. (47.73 SQ.M.)

Whilst every attempt has been made to ensure the accuracy of the floor plan contained here, measurements of doors, windows, rooms and any other items are approximate and no responsibility is taken for any error, omission or mis-statement. This plan is for illustrative purposes only and should be used as such by any prospective purchaser. The services, systems and appliances shown have not been tested and no guarantee as to their operability or efficiency can be given.  
Zome Media ©2019



### Malling Office

777 London Road, Larkfield, Aylesford,  
Kent, ME20 6DE

### Contact

01732 875706  
larkfieldsales@simonmiller.co.uk  
<https://simonmiller.co.uk/>

Agents Note: Whilst every care has been taken to prepare these particulars, they are for guidance purposes only. All measurements are approximate and for general guidance purposes only and whilst every care has been taken to ensure accuracy, they should not be relied upon and potential buyers/tenants are advised to recheck the measurements.