



## Robson Drive

, Aylesford ME20 7JR

- GUIDE PRICE: £375,000 - £400,000
- Planning Permission Granted For Ground Floor Front And Back Extension
- Private Driveway and Garage
- In Need Of Some Modernisation
- Over 1450Sq Ft Of Accommodation
- Two Reception Rooms
- Master Bedroom With En Suite
- Ready To View NOW !

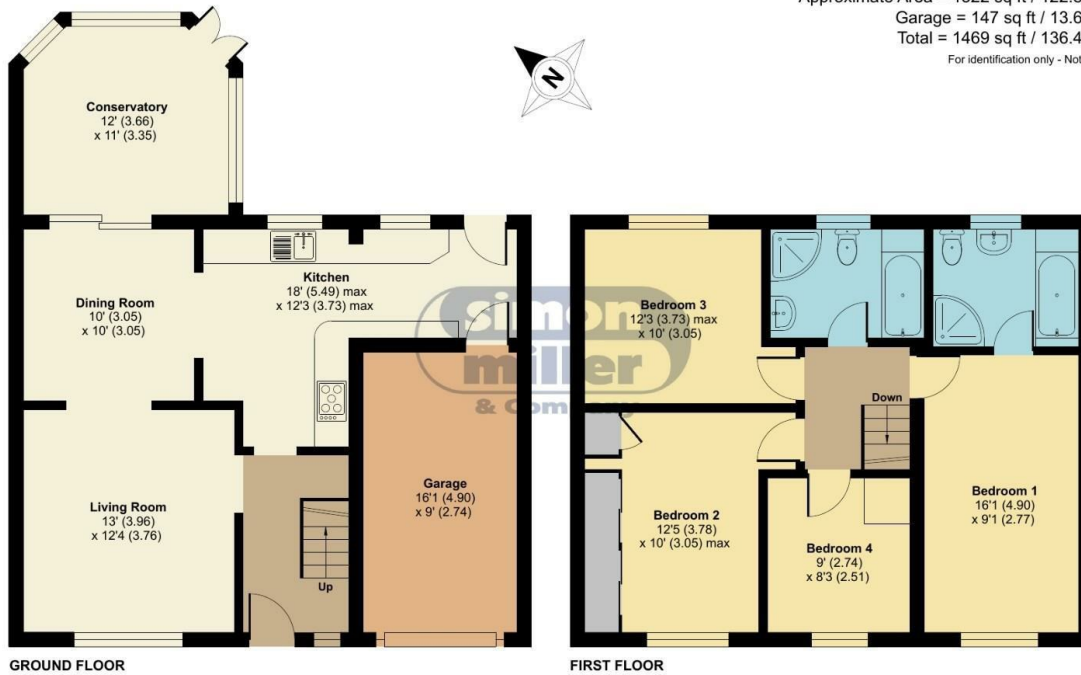
**Guide Price £375,000 Freehold**



Local Authority  
Council Tax Band D  
EPC Rating D

## Robson Drive, Aylesford, ME20

Approximate Area = 1322 sq ft / 122.8 sq m  
Garage = 147 sq ft / 13.6 sq m  
Total = 1469 sq ft / 136.4 sq m  
For identification only - Not to scale



Floor plan produced in accordance with RICS Property Measurement Standards incorporating International Property Measurement Standards (IPMS2 Residential). © nichecom 2024. Produced for Simon Miller & Company. REF: 1184191



**Mailing Office**  
777 London Road, Larkfield, Aylesford,  
Kent, ME20 6DE

**Contact**  
01732 875706  
larkfieldsales@simonmiller.co.uk  
<https://simonmiller.co.uk/>

Agents Note: Whilst every care has been taken to prepare these particulars, they are for guidance purposes only. All measurements are approximate and for general guidance purposes only and whilst every care has been taken to ensure accuracy, they should not be relied upon and potential buyers/tenants are advised to recheck the measurements.