



Fielding Drive

Larkfield, Aylesford ME20 6TY

- GUIDE PRICE £550,000 - £575,000
- Private Cul-De-Sac Location
- Large Side Extension
- Private Rear Garden
- Large Driveway
- Downstairs WC & En-Suite To Master
- Utility Room

Guide Price £550,000 Freehold

Local Authority
Council Tax Band
EPC Rating D

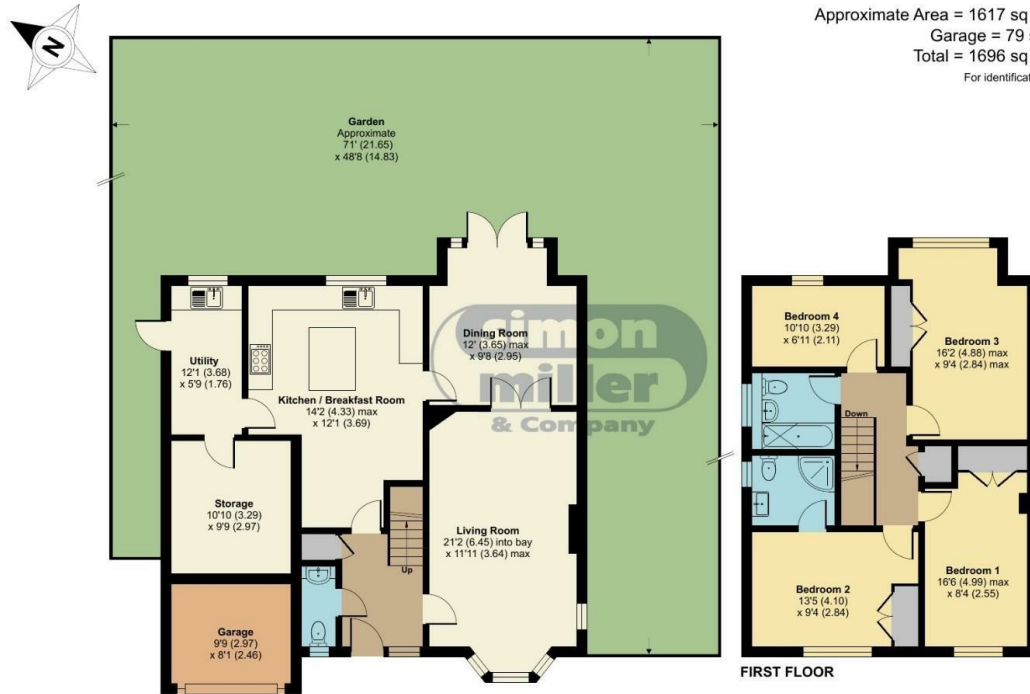
Fielding Drive, Larkfield, Aylesford, ME20

Approximate Area = 1617 sq ft / 150.2 sq m

Garage = 79 sq ft / 7.3 sq m

Total = 1696 sq ft / 157.5 sq m

For identification only - Not to scale



Floor plan produced in accordance with RICS Property Measurement Standards incorporating International Property Measurement Standards (IPMS2 Residential). © nichecom 2024. Produced for Simon Miller & Company. REF: 1183590



Malling Office

777 London Road, Larkfield, Aylesford,
Kent, ME20 6DE

Contact

01732 875706
larkfieldsales@simonmiller.co.uk
<https://simonmiller.co.uk/>

Agents Note: Whilst every care has been taken to prepare these particulars, they are for guidance purposes only. All measurements are approximate and for general guidance purposes only and whilst every care has been taken to ensure accuracy, they should not be relied upon and potential buyers/tenants are advised to recheck the measurements.