



## Queens Road , Snodland ME6 5BH

- Private Garden
- Quiet Location
- South Facing Garden
- First Floor Maisonette
- New Internal Doors

**Offers In Excess Of £190,000 Leasehold**

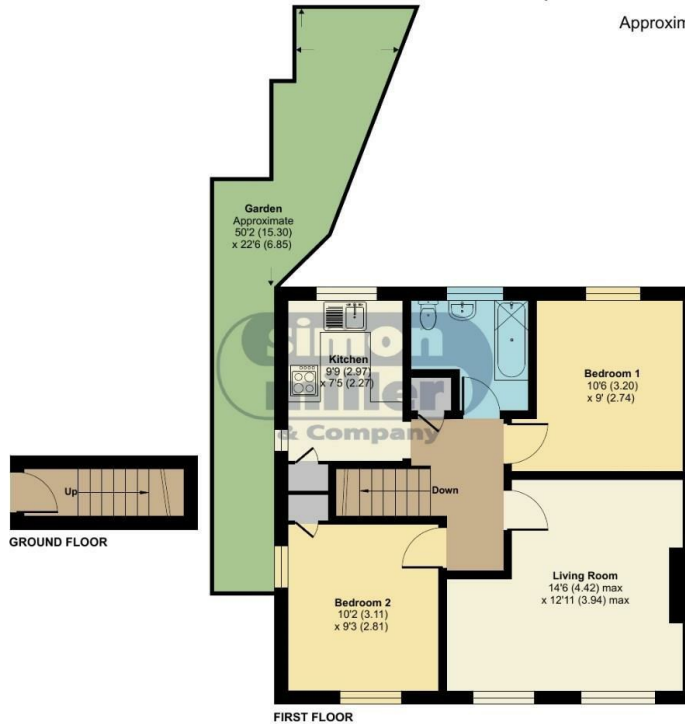
Local Authority  
Council Tax Band  
EPC Rating D



## Queens Road, Snodland, ME6

Approximate Area = 607 sq ft / 56.3 sq m

For identification only - Not to scale



Floor plan produced in accordance with RICS Property Measurement Standards incorporating International Property Measurement Standards (IPMS2 Residential). © richecom 2024. Produced for Simon Miller & Company. REF: 1188014

### Malling Office

777 London Road, Larkfield, Aylesford,  
Kent, ME20 6DE

### Contact

01732 875706  
larkfieldsales@simonmiller.co.uk  
<https://simonmiller.co.uk/>

Agents Note: Whilst every care has been taken to prepare these particulars, they are for guidance purposes only. All measurements are approximate and for general guidance purposes only and whilst every care has been taken to ensure accuracy, they should not be relied upon and potential buyers/tenants are advised to recheck the measurements.

