

Floor plan produced in accordance with RICS Property Measurement Standards incorporating International Property Measurement Standards (IPMS2 Residential). © ndhcom 2024. Produced for Simon Miller & Company. REF: 1182763



Approximate Area = 608 sq ft / 56.4 sq m
For identification only - Not to scale

Edelin Road, Bearsted, Maidstone, ME14

18 Edelin Road, Maidstone, ME14 4RD

**Offers Over £225,000
EPC RATING: C**





We are pleased to offer chain free, this lovely second floor two bedroom apartment in Bearsted. The property comprises a communal entrance with entry system, open plan kitchen/reception, two bedrooms and family bathroom.

The property also benefits from access to a communal garden and allocated parking.

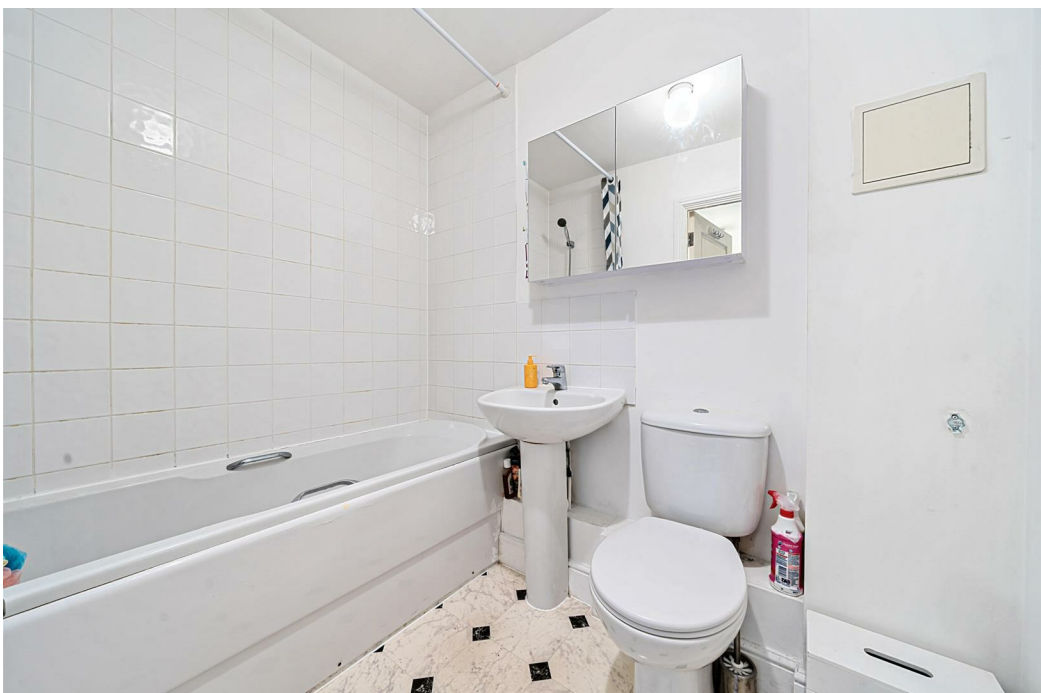
Situated with easy access to the Kent countryside and the thriving County Town of Maidstone.

Maidstone is one of the best retail centres in the south east with Fremlin Walk, The Mall Shopping Centre, Royal Star Arcade, Market Buildings and Week Street providing a range of well-known names and fashionable stores.

A traditional market on Tuesdays and Saturdays can be found at the Lockmeadow Entertainment Centre, which houses an eight screen multiplex cinema, fitness club, restaurants and two night clubs. The Hazlitt Theatre and Corn Exchange offer a range of entertainment including music, drama and dance. Leisure pursuits are plentiful with local golf courses, tennis clubs, squash clubs and fitness/sports centres all close by.

MATERIAL INFORMATION

Leasehold
Council Tax Band C
EPC Report C



• Well Presented Second Floor Apartment Situated In a Small Modern Development • Within Walking distance Of The Mainline Station And Bearsted Village Green • Allocated Parking Space • Chain Free • Sought After And Popular Bearsted Location • Outstanding Schools Nearby & Catchment For Local Grammar Schools

Agents Note: All dimensions are approximate and quoted for guidance only. Reference to appliances, fixtures and fittings does not imply that they are necessarily in good condition, fit the purpose or are in working order. Interested parties are advised to obtain verification from their Solicitors as to the Freehold/Leasehold status of the property and confirmation regarding the condition of any fixtures and fittings included in the sale.

11, COLMAN HOUSE, MAIDSTONE, KENT, ME14 1DJ | 01622 691255 | MAIDSTONESALES@SIMONMILLER.CO.UK