



Grebe Court

Larkfield, Aylesford ME20 6JP

- Situated On The Popular 'Birds' Development In Larkfield
- West Facing Rear Garden
- Garage En Bloc
- Two Reception Rooms
- All Three Bedrooms With Built In Storage
- Ready To View Now

Offers In Excess Of £335,000 Freehold

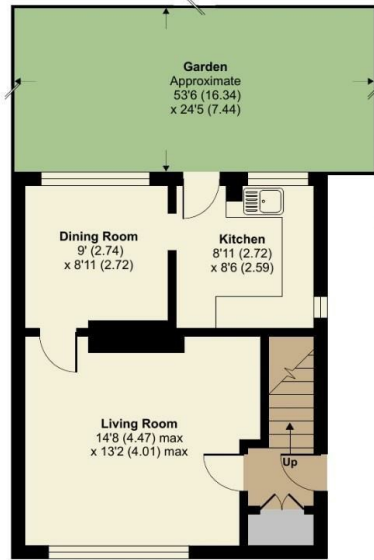


Local Authority
Council Tax Band C
EPC Rating C

Grebe Court, Larkfield, Aylesford, ME20

Approximate Area = 822 sq ft / 76.3 sq m

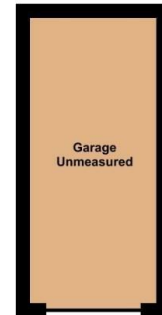
For identification only - Not to scale



GROUND FLOOR



FIRST FLOOR



Floor plan produced in accordance with RICS Property Measurement Standards incorporating International Property Measurement Standards (IPMS2 Residential). © nrichcom 2024. Produced for Simon Miller & Company. REF: 1197902

Malling Office

777 London Road, Larkfield, Aylesford,
Kent, ME20 6DE

Contact

01732 875706
larkfieldsales@simonmiller.co.uk
<https://simonmiller.co.uk/>

Agents Note: Whilst every care has been taken to prepare these particulars, they are for guidance purposes only. All measurements are approximate and for general guidance purposes only and whilst every care has been taken to ensure accuracy, they should not be relied upon and potential buyers/tenants are advised to recheck the measurements.

