



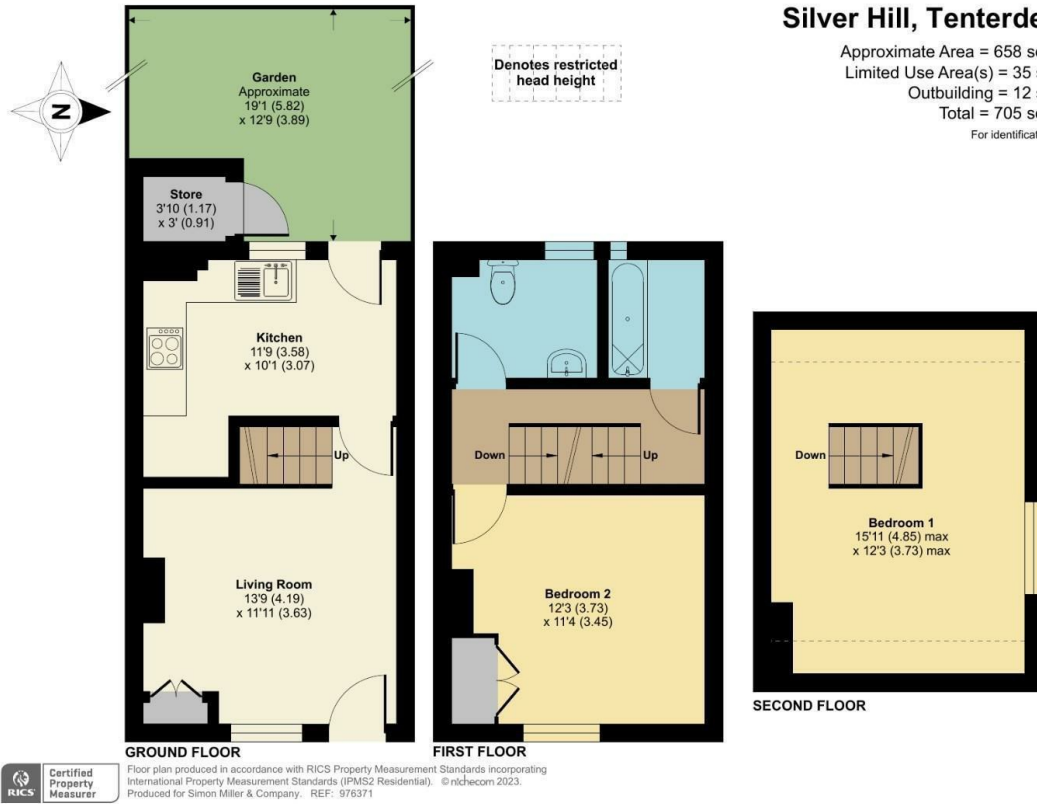
## Silver Hill

, Tenterden TN30 6NE

- Set over Three Floors
- Two Double Bedrooms
- Character Features
- Close To Local Amenities & Tenterden Town Centre
- Refurbished End Terraced Cottage
- Courtyard Garden plus Additional Separate Lawned Garden
- New Gas Central Heating
- Very Well Presented Throughout

**Offers In The Region Of £250,000 Freehold**

Local Authority  
Council Tax Band B  
EPC Rating D



### Silver Hill, Tenterden, TN30

Approximate Area = 658 sq ft / 61.1 sq m  
 Limited Use Area(s) = 35 sq ft / 3.2 sq m  
 Outbuilding = 12 sq ft / 1.1 sq m  
 Total = 705 sq ft / 65.4 sq m  
 For identification only - Not to scale



**Maidstone & The Weald Office**  
 11 Colman House, Colman Parade, King  
 Street, Maidstone, Kent, ME14 1DJ

**Contact**  
 01622 691255  
 maidstonesales@simonmiller.co.uk

Agents Note: Whilst every care has been taken to prepare these particulars, they are for guidance purposes only. All measurements are approximate and for general guidance purposes only and whilst every care has been taken to ensure accuracy, they should not be relied upon and potential buyers/tenants are advised to recheck the measurements.