



Lapins Lane

Kings Hill, West Malling ME19 4LA

- A Four Bedroom detached Family Home
- Corner Plot with Impressive Sized Rear Garden
 - DOUBLE Garage with Driveway
 - GUIDE PRICE: £695,000-£720,000
- LOCATED ON PHASE 1
- Improved and Upgraded Within
- MUST VIEW INTERNALLY

Price Guide £695,000 Freehold

Local Authority
Council Tax Band
EPC Rating C

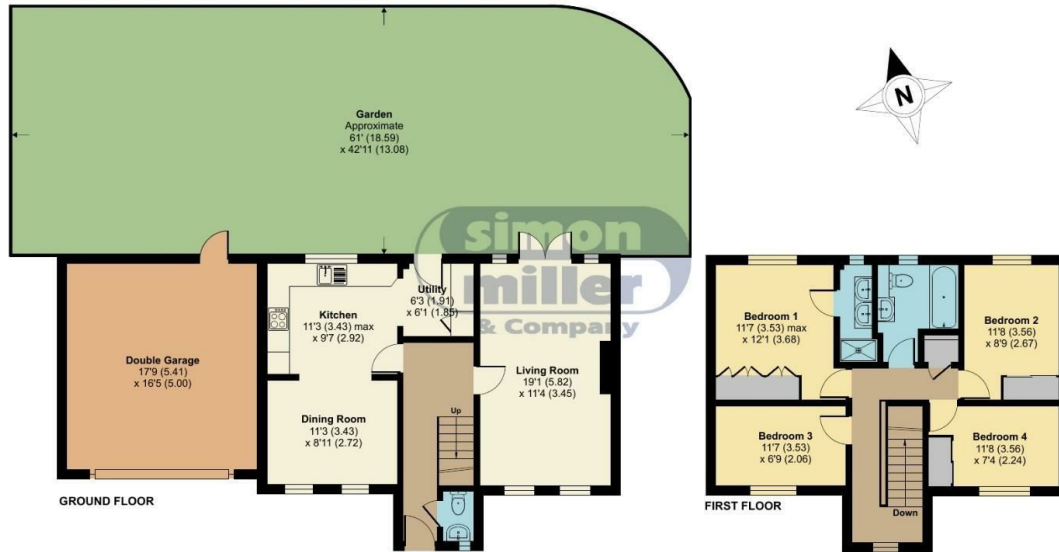
Lapins Lane, Kings Hill, West Malling, ME1

Approximate Area = 1190 sq ft / 110.5 sq m

Garage = 291 sq ft / 27 sq m

Total = 1481 sq ft / 137.5 sq m

For identification only - Not to scale



Floor plan produced in accordance with RICS Property Measurement Standards incorporating International Property Measurement Standards (IPMS2 Residential). © nrichecom 2024. Produced for Simon Miller & Company. REF: 1192833

Malling Office

777 London Road, Larkfield, Aylesford,
Kent, ME20 6DE

Contact

01732 875706
larkfieldsales@simonmiller.co.uk
<https://simonmiller.co.uk/>

Agents Note: Whilst every care has been taken to prepare these particulars, they are for guidance purposes only. All measurements are approximate and for general guidance purposes only and whilst every care has been taken to ensure accuracy, they should not be relied upon and potential buyers/tenants are advised to recheck the measurements.