



## Wheeler Street

Headcorn, Ashford TN27 9ST

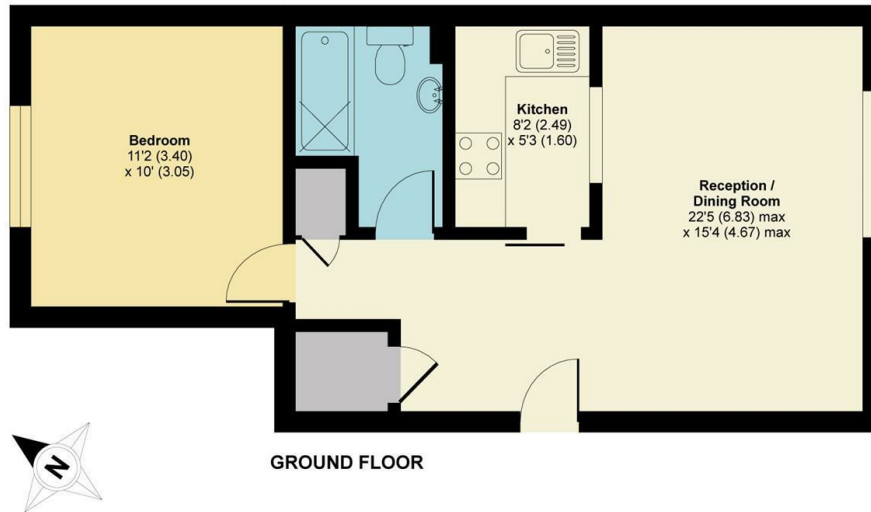
- Ground Floor Maisonette
- Close to the Centre of the Village
  - Double Glazing
  - Communal Gardens
  - Available Immediately!
- One Double Bedroom
- Allocated Parking Space
  - Electric Heating
- Short Walking Distance To Train Station

**£950 Per Calendar Month**

Local Authority Maidstone  
Borough Council  
Council Tax Band B  
EPC Rating C

## Wheeler Street, Headcorn, Ashford, TN27

APPROX. GROSS INTERNAL FLOOR AREA 462 SQ FT 42.9 SQ METRES



Whilst every attempt has been made to ensure the accuracy of the floor plan contained here, measurements of doors, windows and rooms are approximate and no responsibility is taken for any error, omission or misstatement. These plans are for representation purposes only as defined by RICS Code of Measuring Practice and should be used as such by any prospective purchaser. Specifically no guarantee is given on the total square footage of the property if quoted on this plan. Any figure given is for initial guidance only and should not be relied on as a basis of valuation.

Copyright nichecom.co.uk 2019 Produced for Simon Miller & Company REF : 484879

### Lettings Office

Lettings Division, 779 London Road,  
Larkfield, Aylesford, Kent, ME20 6DE

### Contact

01732 875777  
lettings@simonmiller.co.uk  
<https://simonmiller.co.uk/landlo/services/>

Agents Note: Whilst every care has been taken to prepare these particulars, they are for guidance purposes only. All measurements are approximate and for general guidance purposes only and whilst every care has been taken to ensure accuracy, they should not be relied upon and potential buyers/tenants are advised to recheck the measurements.

