



## Kiln Barn Road

East Malling, West Malling ME19 6BQ

- Executive Family Home On A Substantial Plot
- Five Double Bedrooms
- Three Reception Rooms
- Master Suite With Built In Wardrobes And En Suite Bathroom
- Bedroom Two With En Suite Shower Room
- High Specification Fitted Kitchen With Breakfast Bar
- 110Ft Rear Garden
- Heated Swimming Pool
- Double Garage And Driveway
- Cosy Lounge With Log Burning Stove

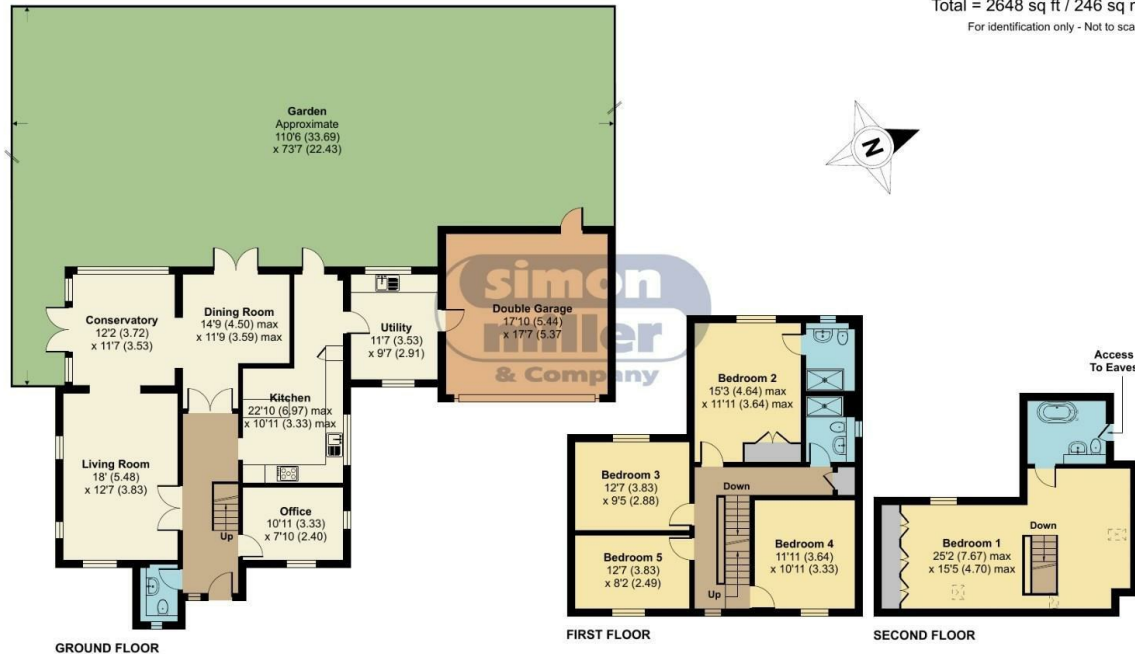
**£995,000 Freehold**



Local Authority  
Council Tax Band G  
EPC Rating D

## Kiln Barn Road, West Malling, ME19

Approximate Area = 2334 sq ft / 216.8 sq m  
Garage = 314 sq ft / 29.2 sq m  
Total = 2648 sq ft / 246 sq m  
For identification only - Not to scale



Floor plan produced in accordance with RICS Property Measurement 2nd Edition, Incorporating International Property Measurement Standards (IPMS2 Residential). © nchecom 2024. Produced for Simon Miller & Company. REF: 1196084



**Malling Office**  
777 London Road, Larkfield, Aylesford,  
Kent, ME20 6DE

**Contact**  
01732 875706  
larkfieldsales@simonmiller.co.uk  
<https://simonmiller.co.uk/>

Agents Note: Whilst every care has been taken to prepare these particulars, they are for guidance purposes only. All measurements are approximate and for general guidance purposes only and whilst every care has been taken to ensure accuracy, they should not be relied upon and potential buyers/tenants are advised to recheck the measurements.