



## Bambridge Court

, Maidstone ME14 2LD

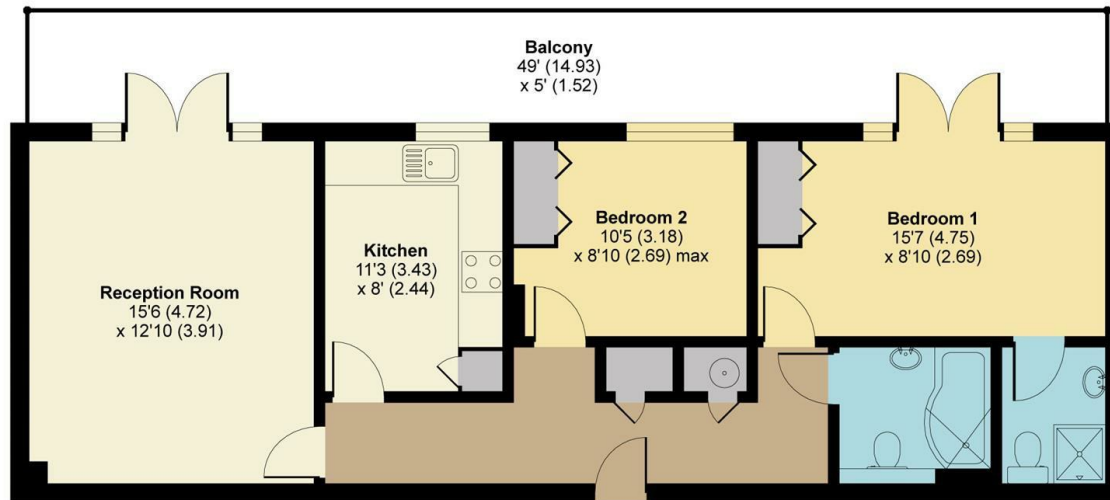
- Stunning Apartment
- 2 Double Bedrooms
  - Lift Access
- Allocated permit parking
- Available December
- 45' Balcony
  - Ensuite
- Appliances included
- Town Centre location

**£1,300 PCM**

Local Authority Maidstone  
Borough Council  
Council Tax Band C  
EPC Rating D

## Lee Heights, Bambridge Court, Maidstone, ME14

APPROX. GROSS INTERNAL FLOOR AREA 751 SQ FT 69.8 SQ METRES



THIRD FLOOR

Whilst every attempt has been made to ensure the accuracy of the floor plan contained here, measurements of doors, windows and rooms are approximate and no responsibility is taken for any error, omission or misstatement. These plans are for representation purposes only as defined by RICS Code of Measuring Practice and should be used as such by any prospective purchaser. Specifically no guarantee is given on the total square footage of the property if quoted on this plan. Any figure given is for initial guidance only and should not be relied on as a basis of valuation.

Copyright nichecom.co.uk 2019 Produced for Simon Miller & Company REF : 558051



### Lettings Office

Lettings Division, 779 London Road,  
Larkfield, Aylesford, Kent, ME20 6DE

### Contact

01732 875777  
lettings@simonmiller.co.uk  
<https://simonmiller.co.uk/landlo/services/>

Agents Note: Whilst every care has been taken to prepare these particulars, they are for guidance purposes only. All measurements are approximate and for general guidance purposes only and whilst every care has been taken to ensure accuracy, they should not be relied upon and potential buyers/tenants are advised to recheck the measurements.