



## Adeline Heights

Rosalind Drive, Maidstone ME14 2FP

- Guide Price £250,000 - £275,000
- Secure Underground Parking
- High Quality Integrated Appliances Included
- Walking Distance To The Train Station And Town
- South Westerly Facing L Shaped Balcony Overlooking Woodland
- Fitted Storage
- Immaculate Throughout
- Easy Access To The Motorway Networks

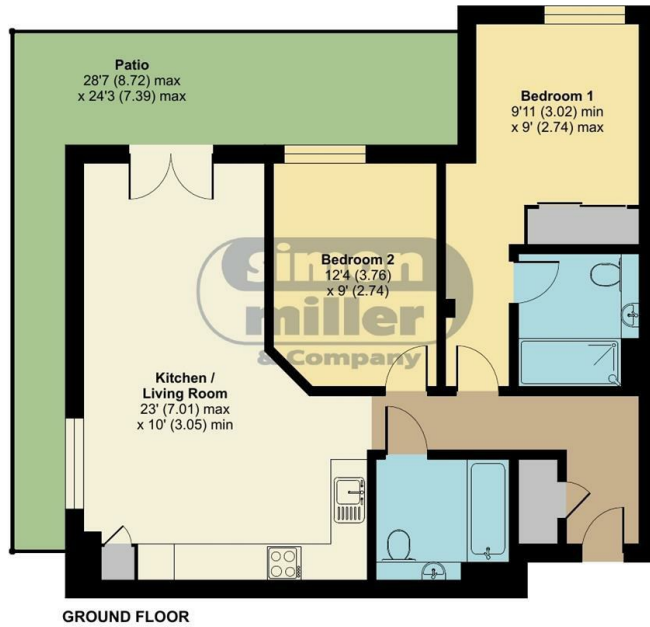
**Guide Price £250,000 Leasehold**



Local Authority  
Council Tax Band D  
EPC Rating B

## Adeline Heights, Rosalind Drive, Maidstone, ME14

Approximate Area = 760 sq ft / 70.6 sq m  
For identification only - Not to scale



GROUND FLOOR

 Floor plan produced in accordance with RICS Property Measurement 2nd Edition, Incorporating International Property Measurement Standards (IPMS2 Residential). © nixhecom 2024. Produced for Simon Miller & Company. REF: 1201453

**Maidstone & The Weald Office**  
11 Colman House, Colman Parade, King  
Street, Maidstone, Kent, ME14 1DJ

**Contact**  
01622 691255  
maidstonesales@simonmiller.co.uk

Agents Note: Whilst every care has been taken to prepare these particulars, they are for guidance purposes only. All measurements are approximate and for general guidance purposes only and whilst every care has been taken to ensure accuracy, they should not be relied upon and potential buyers/tenants are advised to recheck the measurements.

