

**PERIOD HOMES**

By Simon Miller



## Boarley Lane

, Sandling ME14 3BU

- GUIDE PRICE £525,000 - £550,000
- Three Bedrooms
- Quality Fitted Kitchen
- Semi Rural Village Location
- Off Street Parking
- Beautifully Presented Semi Detached Cottage
- Stunning Orangery to Rear
- Separate Study / Guest Bedroom
- Exposed Beams and Period Fireplaces
- Secluded Garden

**Guide Price £525,000 Freehold**

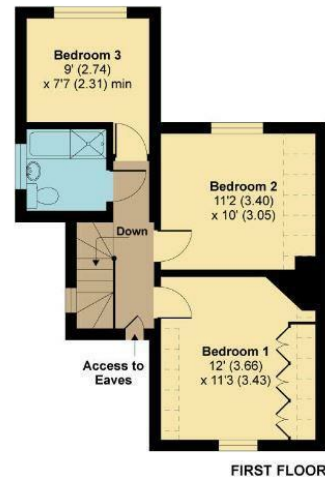
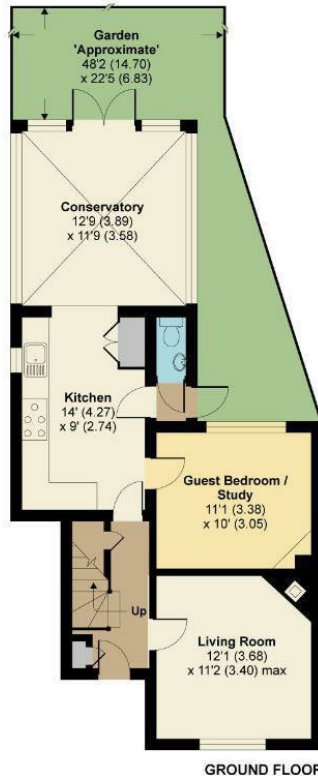
Local Authority  
Council Tax Band D  
EPC Rating E

## Boarley Lane, Sandling, Maidstone, ME14

Approximate Area = 1349 sq ft / 125.0 sq m  
Limited Use Area(s) = 51 sq ft / 4.7 sq m  
Total = 1400 sq ft / 130.1 sq m

For identification only - Not to scale

Denotes restricted  
head height



**Period Homes by Simon Miller Office**  
Weald, 5 High Street, Headcorn, Ashford,  
Kent, TN27 9NH

### Contact

01622 850888  
admin@periodhomesbysimonmiller.co.uk  
<https://simonmiller.co.uk/period-homes/>

Agents Note: Whilst every care has been taken to prepare these particulars, they are for guidance purposes only. All measurements are approximate and for general guidance purposes only and whilst every care has been taken to ensure accuracy, they should not be relied upon and potential buyers/tenants are advised to recheck the measurements.