



Orchard Glade

Headcorn, Ashford TN27 9SR

- Detached Three Bedroom Bungalow
- Walking Distance to Village Centre
- Three Piece Shower Room
- Quiet Cul De Sac Location
- Offered Chain Free
- Spacious Lounge/Dining Room
- Garage and Off Street Parking

Asking Price £500,000 Freehold

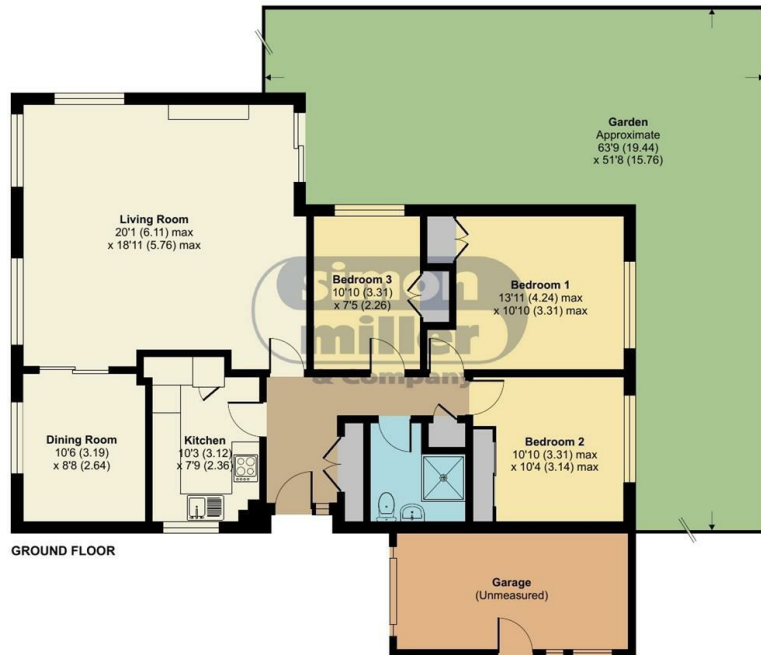
Local Authority
Council Tax Band E
EPC Rating D



Orchard Glade, Ashford, TN27

Approximate Area = 1060 sq ft / 98.5 sq m (excludes garage)

For identification only - Not to scale



Floor plan produced in accordance with RICS Property Measurement Standards incorporating International Property Measurement Standards (IPMS2 Residential). © nichecom 2024. Produced for Simon Miller & Company. REF: 1192384

Maidstone & The Weald Office

11 Colman House, Colman Parade, King
Street, Maidstone, Kent, ME14 1DJ

Contact

01622 691255
maidstonesales@simonmiller.co.uk

Agents Note: Whilst every care has been taken to prepare these particulars, they are for guidance purposes only. All measurements are approximate and for general guidance purposes only and whilst every care has been taken to ensure accuracy, they should not be relied upon and potential buyers/tenants are advised to recheck the measurements.

