



Lettings

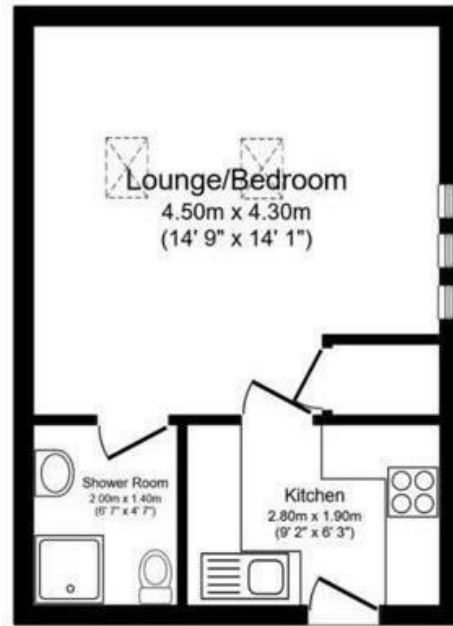


## Western Road , Maidstone ME16 8NE

- Spacious Studio
- Appliances Included
- Outside Space/Parking Space
- Close to Maidstone Hospital and Maidstone Town Centre
- Pets considered
- Available Immediately!

£950

Local Authority  
Council Tax Band B  
EPC Rating E



**Floor Plan**

Total floor area 29.0 sq. m. (312 sq. ft.) approx

This floor plan is for illustrative purposes only. It is not drawn to scale. Any measurements, floor areas (including any total floor area), openings and orientation are approximate. No details are guaranteed, they cannot be relied upon for any purpose and they do not form part of any agreement. No liability is taken for any error, omission or misstatement. A party must rely upon its own inspection(s).  
Plan produced for Your Move. Powered by www.focalagent.com

### Lettings Office

Lettings Division, 779 London Road,  
Larkfield, Aylesford, Kent, ME20 6DE

### Contact

01732 875777  
[lettings@simonmiller.co.uk](mailto:lettings@simonmiller.co.uk)  
<https://simonmiller.co.uk/landlo/services/>

Agents Note: Whilst every care has been taken to prepare these particulars, they are for guidance purposes only. All measurements are approximate and for general guidance purposes only and whilst every care has been taken to ensure accuracy, they should not be relied upon and potential buyers/tenants are advised to recheck the measurements.

