



Keats Road

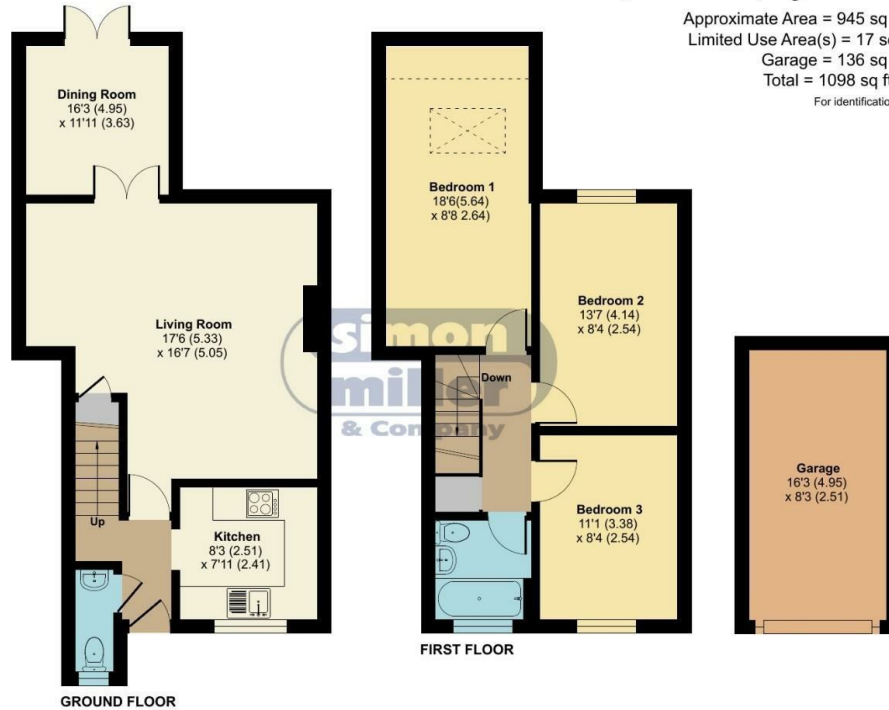
Larkfield, Aylesford ME20 6TR

- Extended Three Bedroom End Of Terrace Home
 - Two Reception Rooms
 - Garage En Bloc
- GUIDE PRICE: £300,000-£325,000
- Three Double Bedrooms
 - Downstairs W/C
 - Ready To View NOW!
- OPEN DAY SATURDAY 27th SEPTEMBER

Guide Price £300,000 Freehold



Local Authority
Council Tax Band C
EPC Rating C



Keats Road, Larkfield, Aylesford, ME20

Approximate Area = 945 sq ft / 87.7 sq m
Limited Use Area(s) = 17 sq ft / 1.5 sq m
Garage = 136 sq ft / 12.6 sq m
Total = 1098 sq ft / 101.8 sq m

For identification only - Not to scale



Floor plan produced in accordance with RICS Property Measurement Standards incorporating International Property Measurement Standards (IPMS2 Residential). © nichecom 2024. Produced for Simon Miller & Company. REF: 1125754

Malling Office

777 London Road, Larkfield, Aylesford,
Kent, ME20 6DE

Contact

01732 875706
larkfieldsales@simonmiller.co.uk
<https://simonmiller.co.uk/>

Agents Note: Whilst every care has been taken to prepare these particulars, they are for guidance purposes only. All measurements are approximate and for general guidance purposes only and whilst every care has been taken to ensure accuracy, they should not be relied upon and potential buyers/tenants are advised to recheck the measurements.