



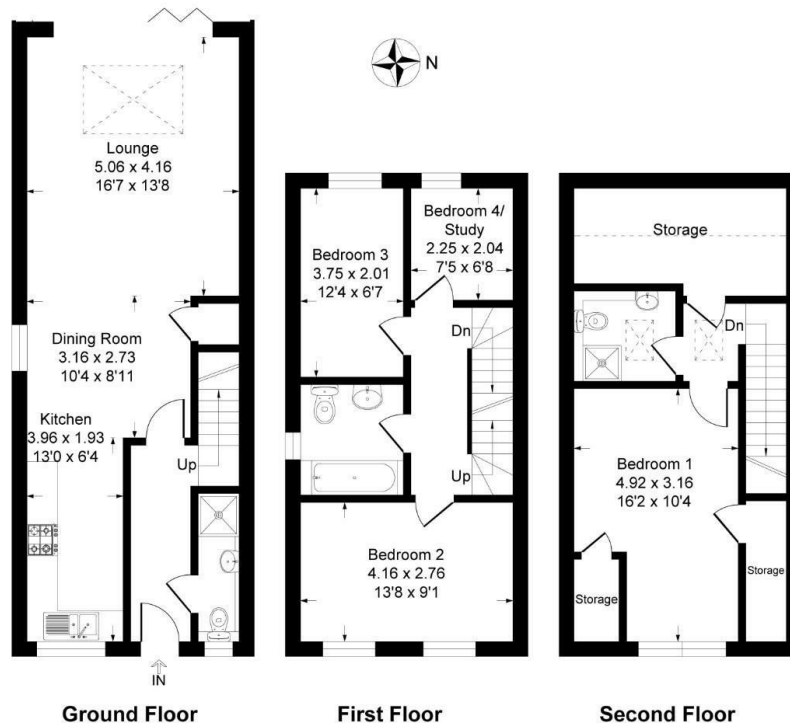
## Maidstone Road

Wrotham Heath, Sevenoaks TN15 7SJ

- COMPLETE ONWARD CHAIN
- Two Allocated Parking spaces
- Approximately 1180 Sq Ft Living Accommodation
- Modern Condition Throughout
- GUIDE PRICE £415,000 - £435,000
- En-Suite To Master Bedroom
- Free Flowing Open Planned Downstairs Room
- Close Proximity To Motorway Access & Train Station

**Price Guide £415,000 Freehold**

Local Authority  
Council Tax Band  
EPC Rating B



Approximate Gross Internal Area = 110.0 sq m / 1184 sq ft



### Malling Office

777 London Road, Larkfield, Aylesford,  
Kent, ME20 6DE

### Contact

01732 875706  
larkfieldsales@simonmiller.co.uk  
<https://simonmiller.co.uk/>

Agents Note: Whilst every care has been taken to prepare these particulars, they are for guidance purposes only. All measurements are approximate and for general guidance purposes only and whilst every care has been taken to ensure accuracy, they should not be relied upon and potential buyers/tenants are advised to recheck the measurements.