



## The Lakes , Larkfield ME20 6GZ

- Popular 'Leybourne Lakes' Location - CHAIN FREE
- Master Bedroom With En Suite
  - Lake Views
- Private Allocated Parking
- Living Room With Balcony
- Two Reception Rooms
- Flexible Family Accommodation
- Three Double Bedrooms

**Offers In Excess Of £375,000 Freehold**



Local Authority  
Council Tax Band E  
EPC Rating C

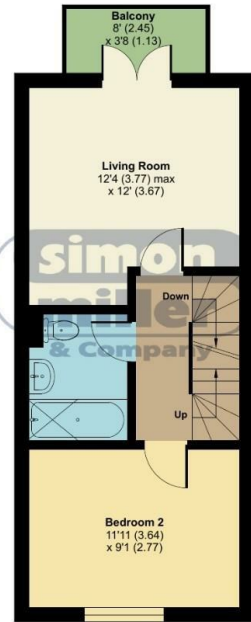
## The Lakes, Larkfield, Aylesford, ME2

Approximate Area = 1077 sq ft / 100 sq m

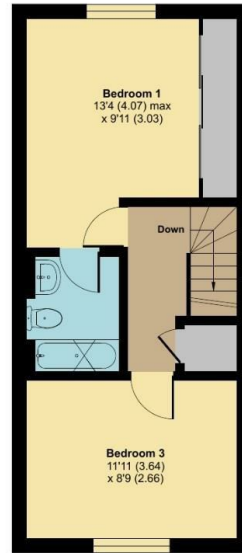
For identification only - Not to scale



GROUND FLOOR



FIRST FLOOR



SECOND FLOOR



Floor plan produced in accordance with RICS Property Measurement Standards incorporating International Property Measurement Standards (IPMS2 Residential). © nrichecom 2024. Produced for Simon Miller & Company. REF: 1182279



**Mailing Office**  
777 London Road, Larkfield, Aylesford,  
Kent, ME20 6DE

**Contact**  
01732 875706  
larkfieldsales@simonmiller.co.uk  
<https://simonmiller.co.uk/>

Agents Note: Whilst every care has been taken to prepare these particulars, they are for guidance purposes only. All measurements are approximate and for general guidance purposes only and whilst every care has been taken to ensure accuracy, they should not be relied upon and potential buyers/tenants are advised to recheck the measurements.