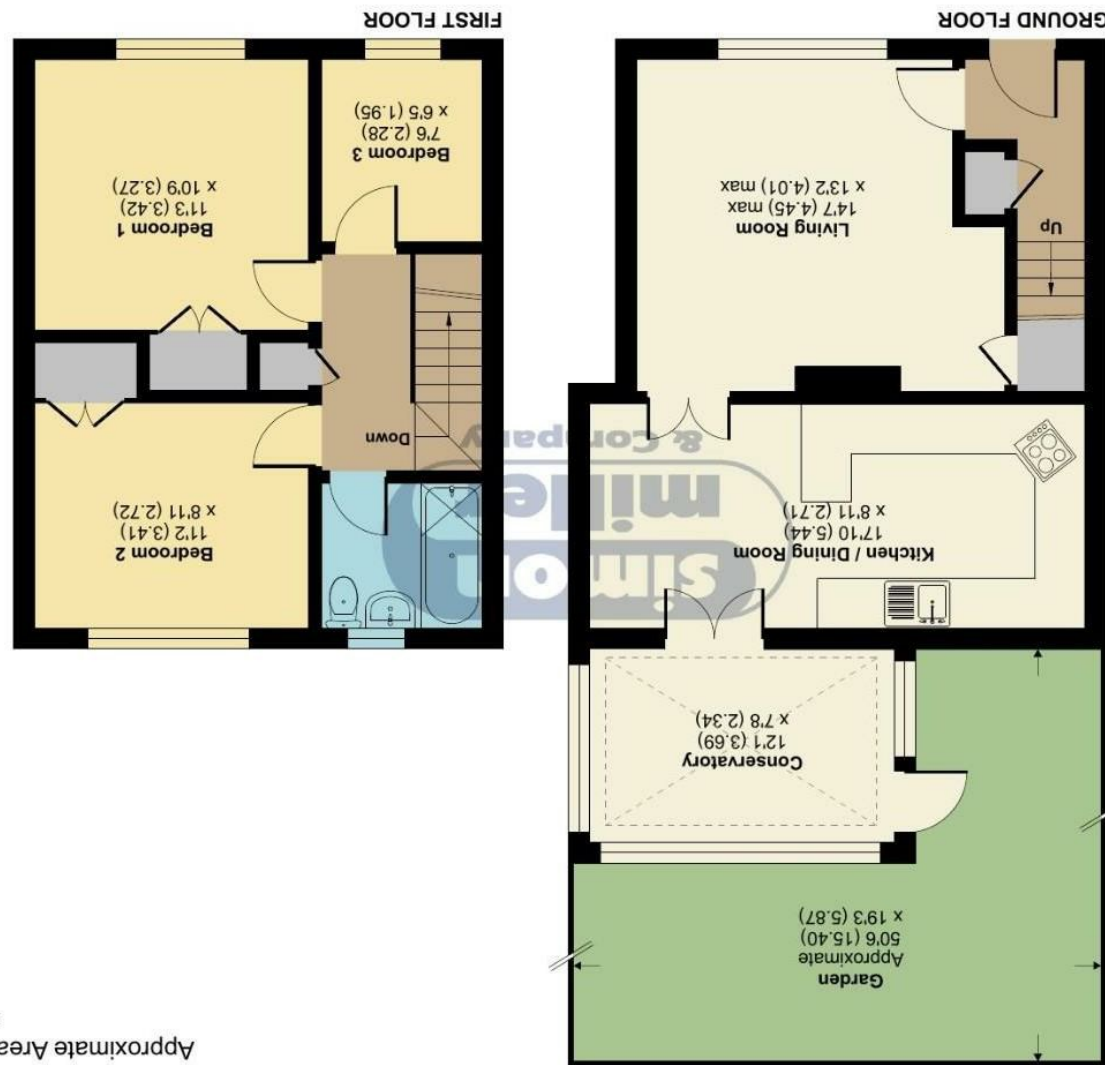


Floor plan produced in accordance with RICS Property Measurement 2nd Edition, incorporating International Property Measurement Standards (IPMS2 Residential). © nchecom 2024. Produced for Simon Miller & Company. REF: 1208710



Swallow Road, Larkfield, Aylesford, ME20
Approximate Area = 920 sq ft / 85.4 sq m
For identification only - Not to scale

17 Swallow Road, Larkfield, ME20 6LE

Guide Price £325,000
EPC RATING: D





GUIDE PRICE: £325,000-£335,000

A three bedroom terrace house located on the popular 'Birds' development in Larkfield. The property has undergone improvements by the current owner and benefits include, an additional conservatory, double glazing, a refitted kitchen and a garage to the rear, plus a driveway and parking to the front. Please contact the office to arrange a look inside.

MATERIAL INFORMATION

Freehold
Council Tax Band C
EPC Report D



• GUIDE PRICE: £325,000-£335,000 • A THREE Bedroom Family Home • Upgraded Interior • Garage to Rear • Own Driveway and Parking to Front • Popular Residential Location

Agents Note: All dimensions are approximate and quoted for guidance only. Reference to appliances, fixtures, fittings and services does not imply that they are necessarily in good condition, fit the purpose or are in working order. Interested parties are advised to obtain verification from their Solicitors as to the Freehold/Leasehold status of the property and confirmation regarding the condition of any fixtures and fittings included in the sale.

777, LONDON ROAD, AYLESFORD, KENT, ME20 6DE | 01732 875706 | LARKFIELDSALES@SIMONMILLER.CO.UK