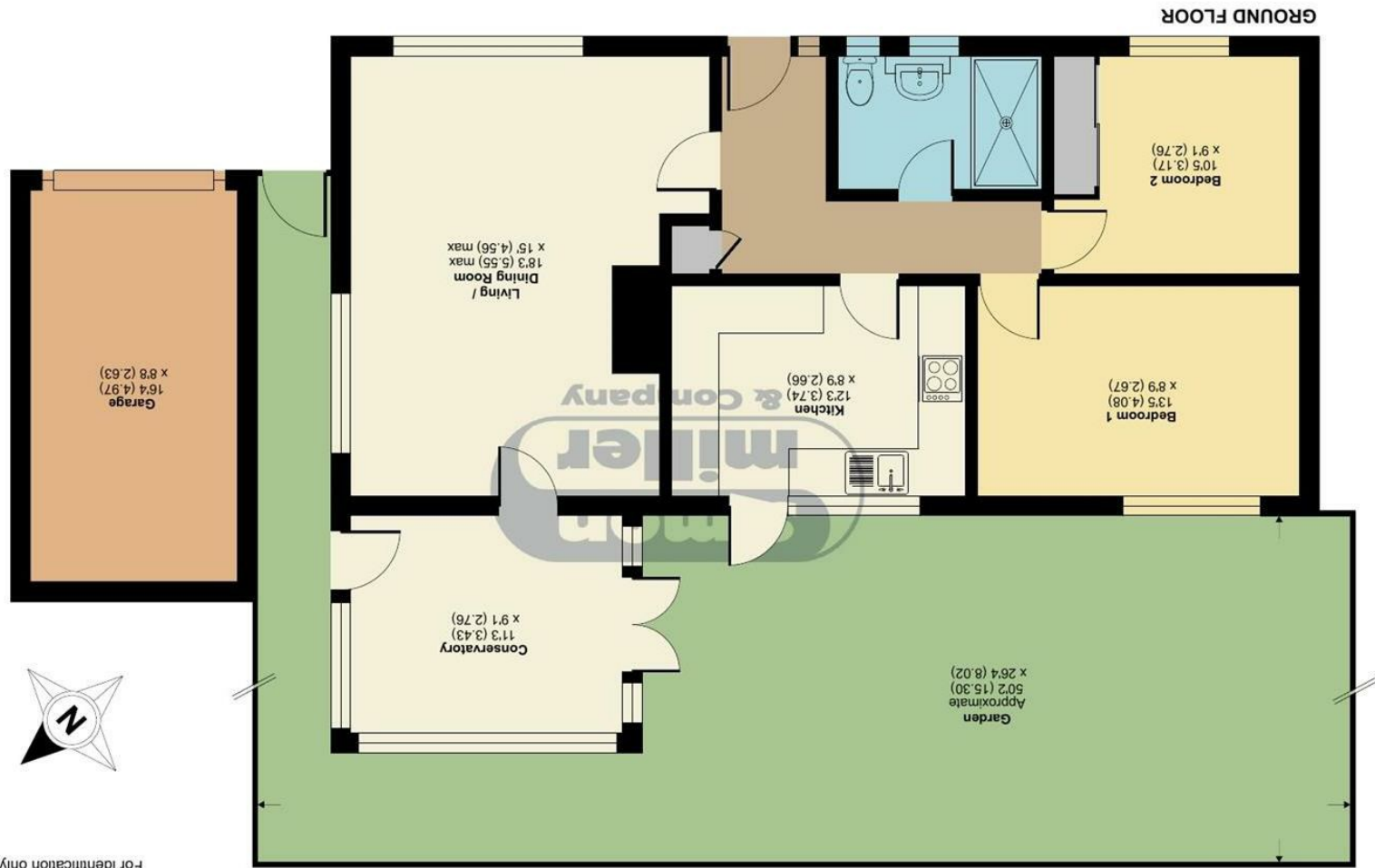


Floor plan produced in accordance with RICS Property Measurement 2nd Edition, incorporating International Property Measurement Standards (IPMS2 Residential). © nchecom 2024. Produced for Simon Miller & Company. REF: 1214127



Approximate Area = 834 sq ft / 77.4 sq m
Garage = 140 sq ft / 13 sq m
Total = 974 sq ft / 90.4 sq m
For identification only - Not to scale

Bramshott Close, Maidstone, ME16

5 Bramshott Close, Maidstone, ME16 0RX

Asking Price £425,000
EPC RATING: E





Welcome to this charming two-bedroom detached bungalow located in the serene Bramshott Close, Allington. This delightful property, built in 1965, offers a cozy retreat with its two bedrooms, ideal for a small family or those seeking a peaceful abode.

Situated in a quiet cul-de-sac in Allington, this bungalow boasts a spacious reception room, perfect for relaxing or entertaining guests. The property features a well-maintained bathroom and a garage, providing ample space for storage or parking. With a generous 974 sq ft of living space, this home presents a comfortable environment with neutral decor throughout, allowing you to easily add your personal touch. The chain-free status of this property offers you the flexibility to make it your own without any delays.

Conveniently located within walking distance to the Mid Kent Shopping Center, you'll have easy access to a variety of shops and amenities. Whether you're looking to unwind in the tranquility of the garden or explore the nearby surroundings, this bungalow offers a perfect blend of comfort and convenience.

Don't miss out on the opportunity to own this lovely detached bungalow in Maidstone. Book a viewing today and envision the potential this property holds for you and your loved ones.

MATERIAL INFORMATION

Freehold
Council Tax Band D
EPC Report E



• Two Double Bedroom Detached Bungalow • Chain Free • Garage & Off Street Parking • Conservatory • New Kitchen & Boiler • Located In A Quiet Cul De Sac In Allington • Presented In Excellent Condition With Neutral Decor Throughout • Close To Maidstone Hospital And Motorway Links • Walking Distance To [Mid Kent Shopping Center & Bus Routes](#)

Agents Note: All dimensions are approximate and quoted for guidance only. Reference to appliances, fixtures, fittings and services does not imply that they are necessarily in good condition, fit the purpose or are in working order. Interested parties are advised to obtain verification from their Solicitors as to the Freehold/Leasehold status of the property and confirmation regarding the condition of any fixtures and fittings included in the sale.

11, COLMAN HOUSE, MAIDSTONE, KENT, ME14 1DJ | 01622 691255 | MAIDSTONESALES@SIMONMILLER.CO.UK