



Waterman Way

Wouldham, Rochester ME1 3FY

- Freehold Two Double Bedroom Coach House
- Carport Parking For X2 Cars
- Open Plan Layout
- Modern and Contemporary Throughout
- Kitchen With Integrated Appliances
- Popular 'Peters Village' Location

£290,000 Freehold



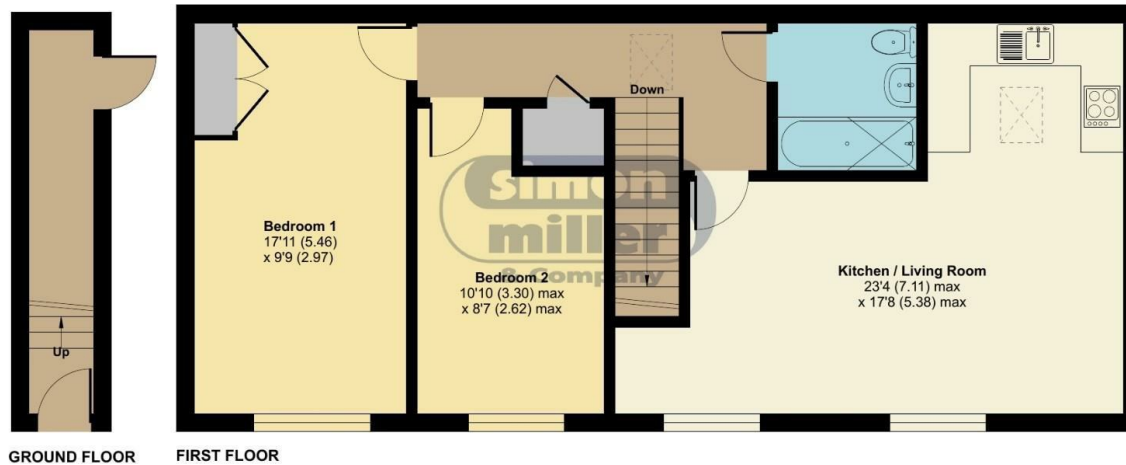
Local Authority
Council Tax Band C
EPC Rating B



Waterman Way, Wouldham, Rochester, ME1

Approximate Area = 813 sq ft / 75.5 sq m

For identification only - Not to scale



Floor plan produced in accordance with RICS Property Measurement 2nd Edition, Incorporating International Property Measurement Standards (IPMS2 Residential). © nichecom 2024. Produced for Simon Miller & Company. REF: 1219460

Malling Office

777 London Road, Larkfield, Aylesford,
Kent, ME20 6DE

Contact

01732 875706
larkfieldsales@simonmiller.co.uk
<https://simonmiller.co.uk/>

Agents Note: Whilst every care has been taken to prepare these particulars, they are for guidance purposes only. All measurements are approximate and for general guidance purposes only and whilst every care has been taken to ensure accuracy, they should not be relied upon and potential buyers/tenants are advised to recheck the measurements.

